

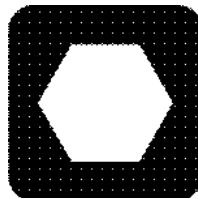
# ***Ditch Witch***<sup>®</sup>

## **1TR4/SK4TR Parts Manual**


Issue: 03PL-01/18

Part Number 053-2309

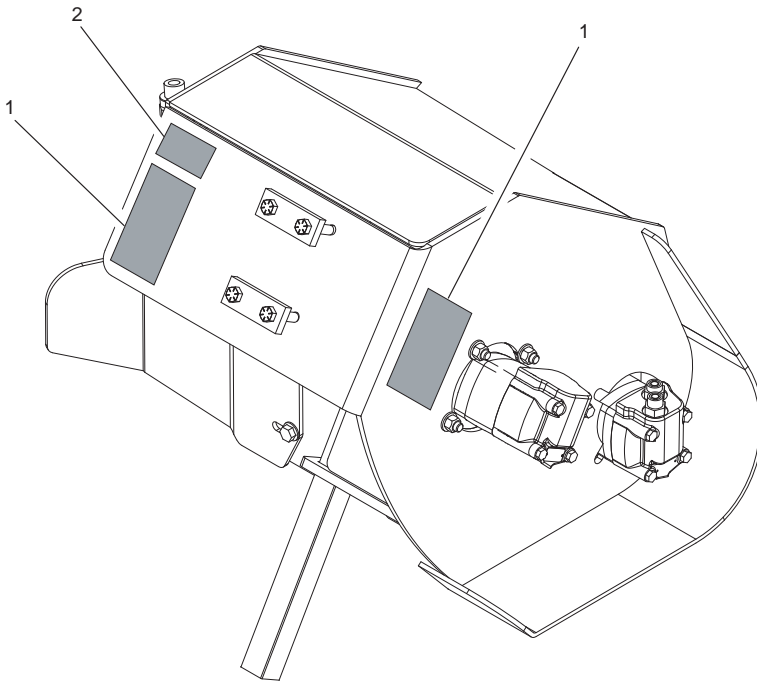
For replacement copy, contact your Ditch Witch dealer.



Copyright 2012, 2016, 2018 by The Charles Machine Works, Inc.

  **Ditch Witch**<sup>®</sup>, Ditch Witch, CMW, and Roto Witch are registered trademarks of The Charles Machine Works, Inc.

# DECAL LOCATION 1TR4 / SK4TR



## DECAL LOCATION

1TR4 / SK4TR

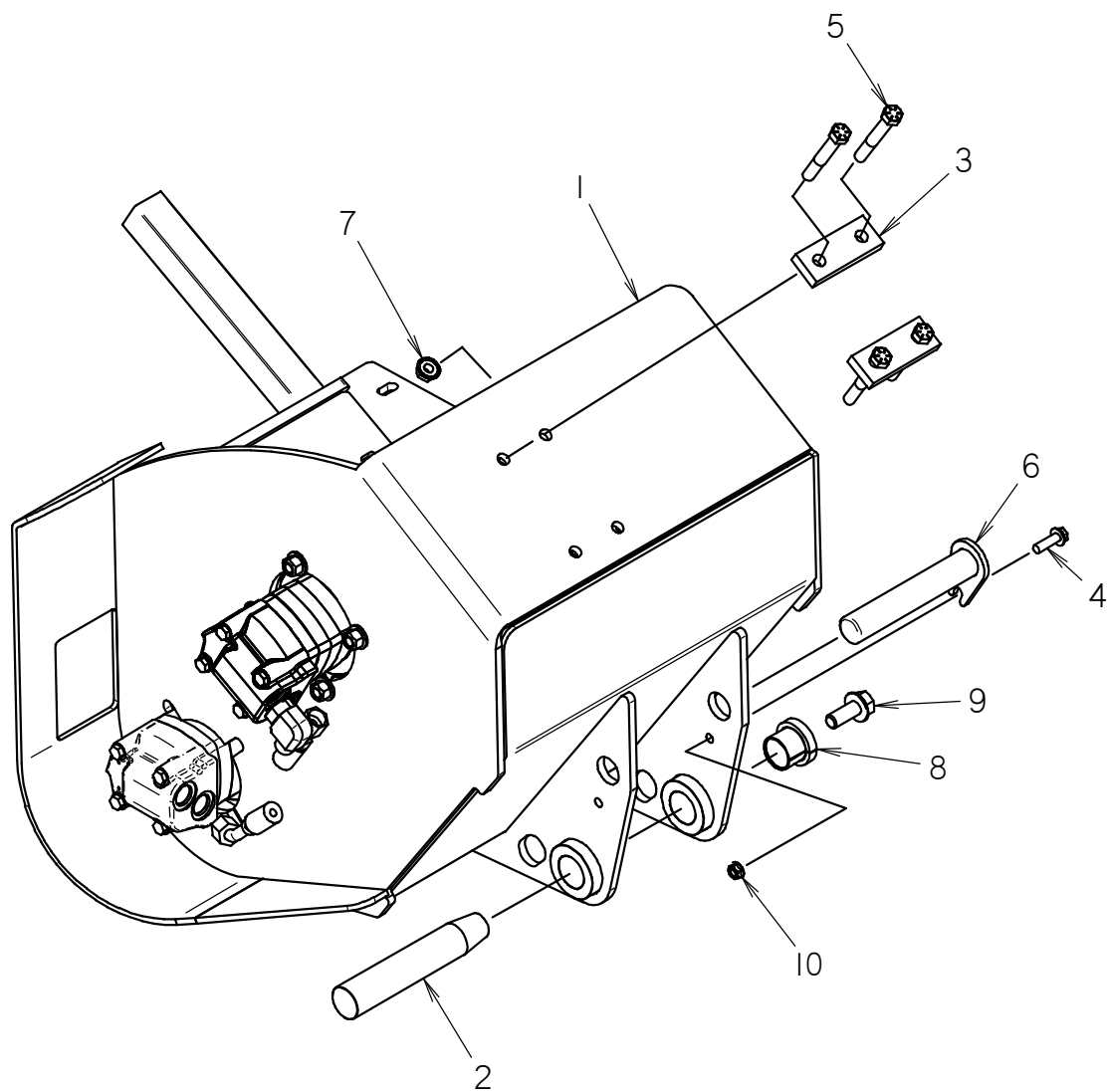
REF PART

NO. NUMBER QTY DESCRIPTION REMARKS

REF NO.	PART NUMBER	QTY	DESCRIPTION	REMARKS
	270-2004		DECAL KIT - 1TR4 / SK4TR	
1	275-097	2	DANGER CHAIN & AUGER DECAL	
2	270-6773	1	PATENT	

FOOTNOTES:

# 12" PIVOT 1TR4



# 12" PIVOT 1TR4

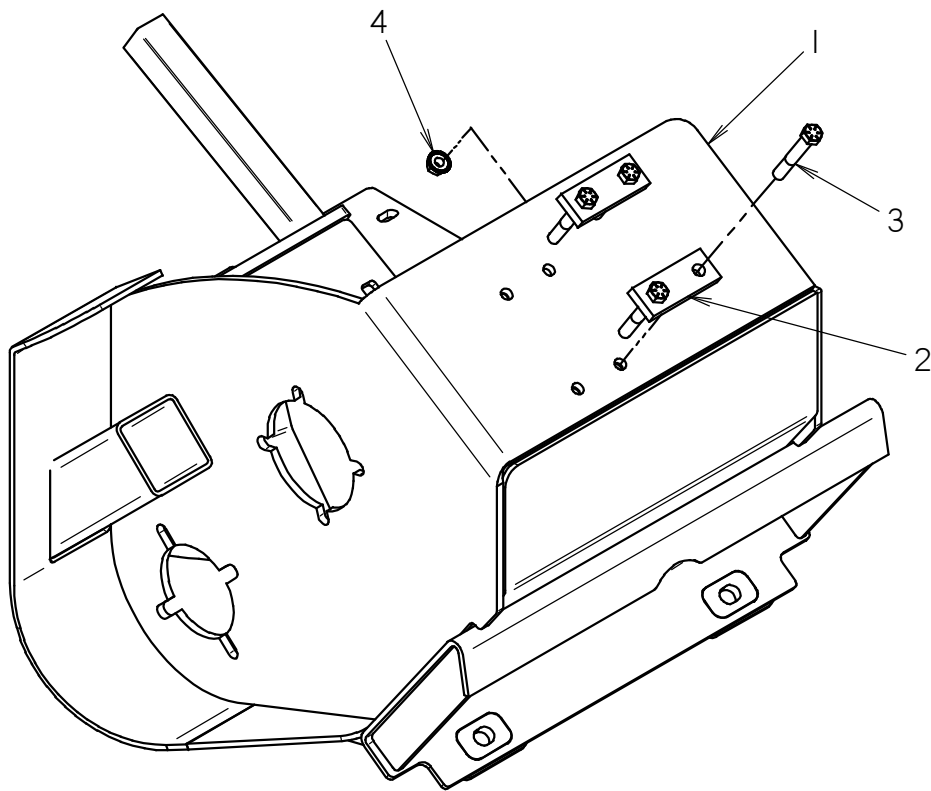
REF NO.	PART NUMBER	QTY	DESCRIPTION	REMARKS
1	300-3910	1	12" TRENCHER FRAME	
2	183-723	1	TAPERED PIN (1.500" X 8.000")	
3	141-148	2	SUPPORT CLAMP BAR	
4	105-827	1	FLG LK BOLT (3/8-NC X 1-1/4")	
5	105-136	4	BOLT (1/2-NC X 3-1/2", GD8)	
6	300-3974	1	TAB PIN 1.25 X 7.00	
7	105-833	4	FLG LOCKNUT (1/2-NC)	
8	181-974	1	TAPERED INSERT (1.5")	
9	105-969	1	FLG BOLT (5/8-NC X 1-1/2",GD8)	
10	105-834	1	FLG LOCKNUT (3/8-NC)	

NOT SHOWN:

FOOTNOTES:

NOTE:

12" PIVOT  
SK4TR



# 12" PIVOT SK4TR

REF NO.	PART NUMBER	QTY	DESCRIPTION	REMARKS
1	300-7105	1	TRENCHER FRAME SK4TR	
2	141-148	2	SUPPORT CLAMP BAR	
3	105-136	4	BOLT (1/2-NC X 3-1/2", GD8)	
4	105-833	4	FLG LOCKNUT (1/2-NC)	

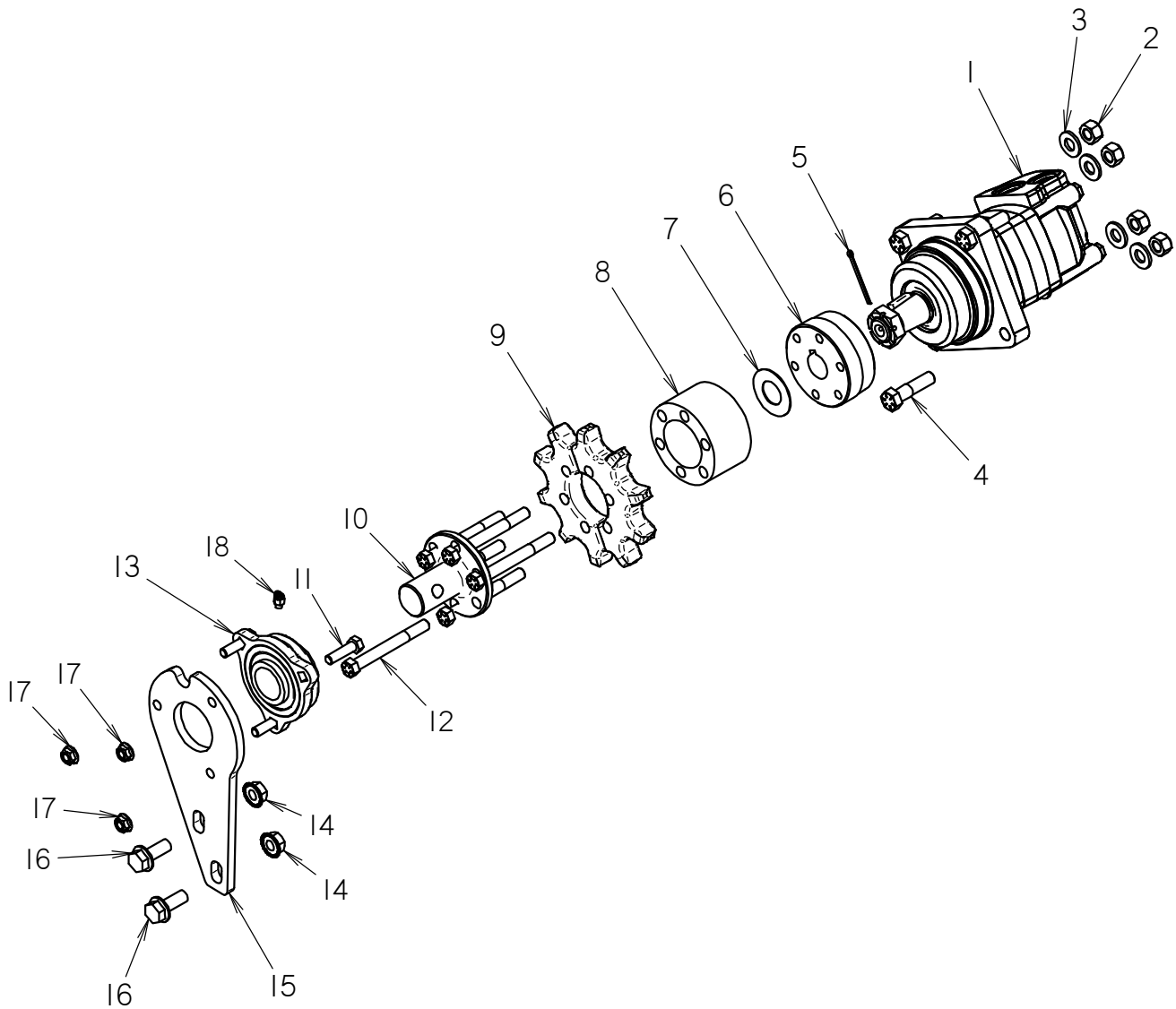
NOT SHOWN:

FOOTNOTES:

NOTE:

# 12" CHAIN DRIVE SPROCKET

1TR4  
ENDS WITH S/N





# 12" CHAIN DRIVE SPROCKET 1TR4

## ENDS WITH S/N

REF NO.	PART NUMBER	QTY	DESCRIPTION	REMARKS
1	159-700	1	HYD MOTOR (9.8 IN3)	USE SEAL KIT 191-481
2	105-065	4	LOCKNUT (1/2-NC)	
3	106-743	4	WASHER (.531", HARDENED)	
4	105-871	4	BOLT (1/2-NC X 2" GD8)	TORQUE TO 75 FT/LBS
5	105-501	1	COTTER PIN (.125" X 2.0')	
6	184-659	1	SPROCKET DRIVE HUB	
7	110-171	1	MACHINERY BUSHING	
8	300-3918	1	SPROCKET SPACER	
9	142-109	1	HEADSHAFT SPROCKET HALF	
10	300-3458	1	AUGER DRIVE HUB	
11	106-004	3	BOLT (3/8-NC X 1-3/8", GD8)	
12	107-443	6	BOLT (7/16-NC X 4.0", GD 8)	
13	125-623	1	FLANGE BEARING (1.375")	
14	105-833	2	FLG LOCKNUT (1/2-NC)	
15	300-3917	1	BEARING SUPPORT	
16	105-830	2	FLG LK BOLT (1/2-NC X 1-1/4")	
17	105-834	3	FLG LOCKNUT (3/8-NC)	
18	115-006	1	ZERK (1/4-NF,45)	

### NOT SHOWN:

150-1336	HYDRAULIC MOTOR - 12.29	USES SEAL KIT 500-1428 & SHAFT AND BEARING KIT 500-2399
150-1337	HYDRAULIC MOTOR - 15.43	USES SEAL KIT 500-1428 & SHAFT AND BEARING KIT 500-2399
502-176	SHAFT AND BEARING ASSY	SERVICE PART FOR 159-700 HYD MOTOR
301-1871	SPROCKET 10T (1.686 2.160 ID)	OPTIONAL SPROCKET FOR SANDY CONDITIONS

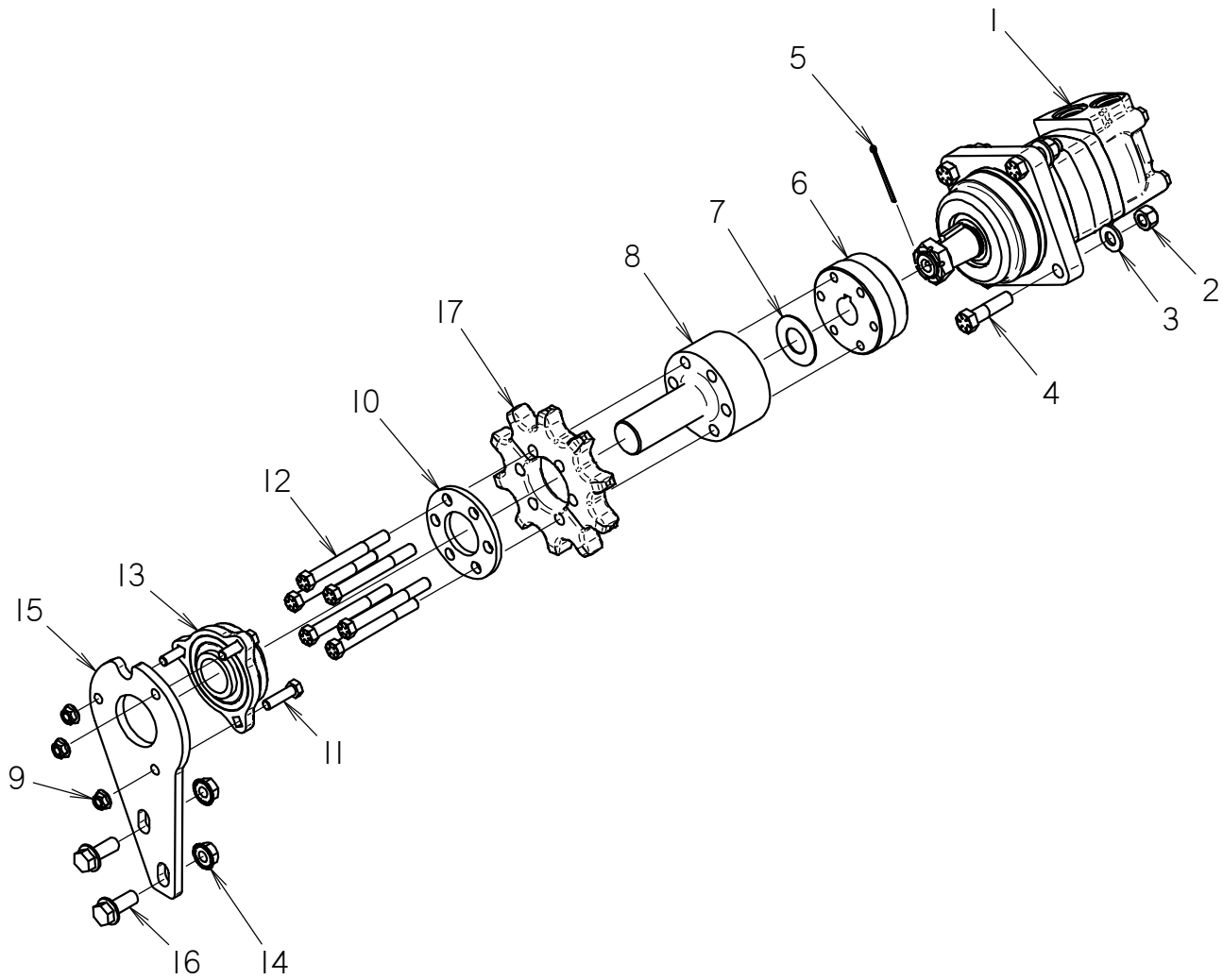
### FOOTNOTES:

1. 140-1222 HEADSHAFT SPROCKET, INCLUDES 2 HALVES; 301-1871 IS AN OPTIONAL SPROCKET FOR SANDY SOIL.

### NOTE:

# 12" CHAIN DRIVE SPROCKET

1TR4, SK4TR  
BEGINS WITH S/N



# 12" CHAIN DRIVE SPROCKET

## 1TR4, SK4TR

### BEGINS WITH S/N

REF NO.	PART NUMBER	QTY	DESCRIPTION	REMARKS
1	150-1336	1	HYDRAULIC MOTOR	SEE FOOTNOTE 1
2	105-065	3	LOCKNUT (1/2-NC)	
3	106-743	3	WASHER (.531", HARDENED)	
4	105-871	4	BOLT (1/2-NC X 2" GD8)	TORQUE TO 75 FT/LBS
5	105-501	1	COTTER PIN (.125" X 2.0")	
6	184-659	1	SPROCKET DRIVE HUB	
7	110-171	1	MACHINERY BUSHING	
8	300-6770	1	SPROCKET SHAFT	
9	105-834	3	FLG LOCKNUT (3/8-NC)	
10	300-6772	1	SPROCKET RING	
11	106-004	3	BOLT (3/8-NC X 1-3/8", GD8)	
12	107-443	6	BOLT (7/16-NC X 4.0", GD 8)	
13	125-623	1	FLANGE BEARING (1.375")	
14	105-833	2	FLG LOCKNUT (1/2-NC)	
15	300-3917	1	BEARING SUPPORT	
16	105-830	2	FLG LK BOLT (1/2-NC X 1-1/4")	
17	142-109	1	HEADSHAFT SPROCKET HALF	INCLUDES 2 HALVES

## NOT SHOWN:

301-1871 1 SPROCKET 10T (1.686 2.160 ID)

OPTIONAL SPROCKET FOR SANDY SOIL

## FOOTNOTES:

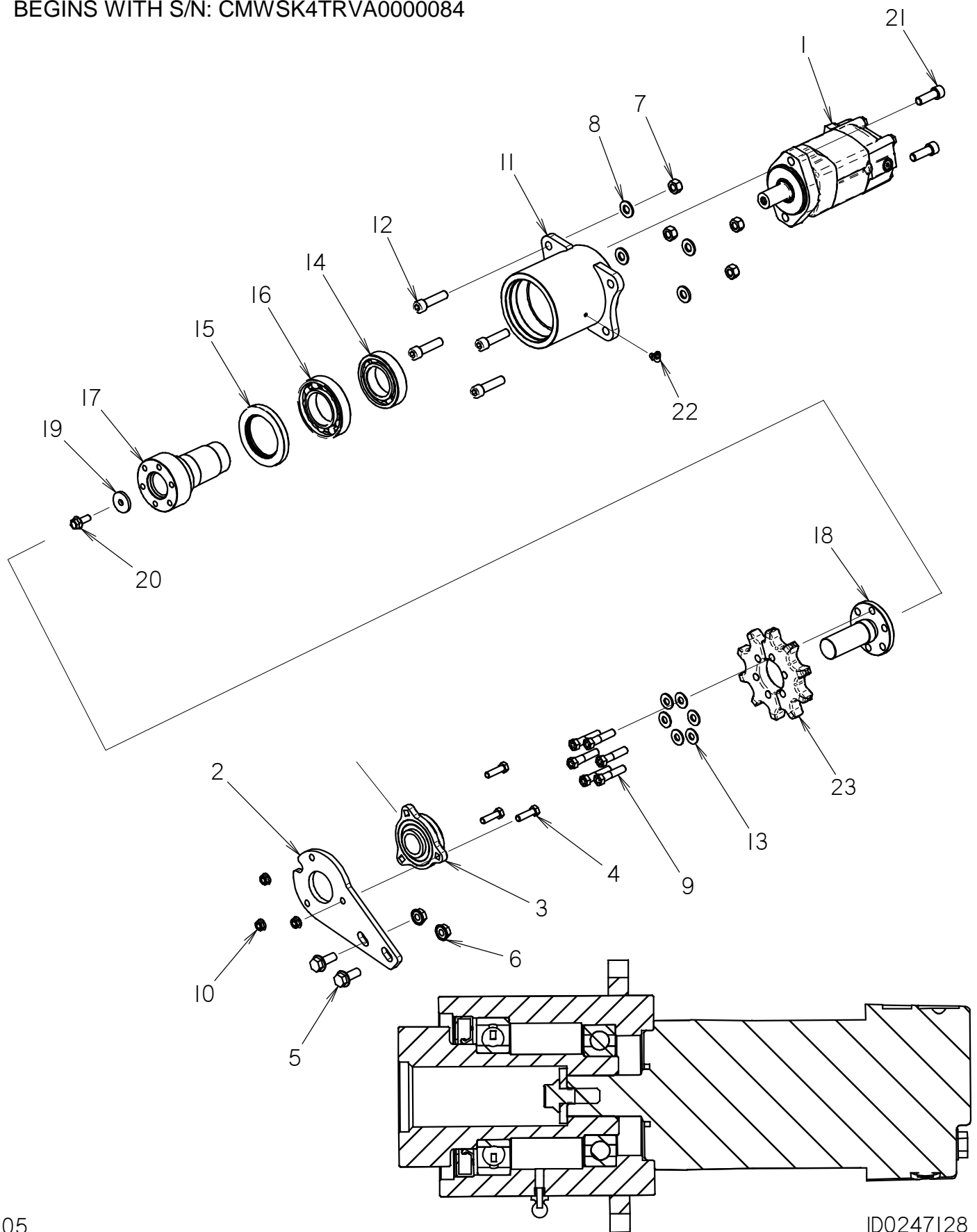
1- MOTOR OPTIONS: 150-1336 11.9 CU/IN (1509) &amp; 150-1337 14.93 CU/IN (1510) BOTH USE SEAL KIT 500-1428 &amp; SHAFT AND BEARING KIT 500-2399

## NOTE:

# 12" BEARING CHAIN DRIVE SPROCKET

BEGINS WITH S/N: CMW1TR4XCA0000460

BEGINS WITH S/N: CMWSK4TRVA0000084



**12" BEARING CHAIN DRIVE SPROCKET**

BEGINS WITH S/N: CMW1TR4XCA0000460

BEGINS WITH S/N: CMWSK4TRVA0000084

REF NO.	PART NUMBER	QTY	DESCRIPTION	REMARKS
1	155-581	1	HYD MOTOR	SEE FOOTNOTES 1, 2, & 3
2	300-3917	1	BEARING SUPPORT	
3	125-623	1	FLANGE BEARING (1.375")	
4	106-004	3	BOLT (3/8-NC X 1-3/8", GD8)	
5	105-830	2	FLG LK BOLT (1/2-NC X 1-1/4")	
6	105-833	2	FLG LOCKNUT (1/2-NC)	
7	105-065	4	LOCKNUT (1/2-NC)	
8	106-743	4	WASHER (.531", HARDENED)	
9	105-068	6	BOLT (7/16-NC X 2")	SEE FOOTNOTES 4 & 5
10	105-834	3	FLG LOCKNUT (3/8-NC)	
11	300-9447	1	BEARING HOUSING	
12	105-869	4	BOLT (1/2-NC X 2", SOC)	
13	107-368	6	WASHER (3/8" HARDENED)	
14	125-040	1	BALL BEARING (1.968")	
15	155-898	1	INTERNAL SEAL (4.008")	
16	125-049	1	BALL BEARING	
17	160-1189	1	SPROCKET DRIVE HUB	
18	160-1196	1	BEARING SHAFT	
19	105-879	1	WASHER (3/8")	
20	107-244	1	FLG LK BOLT (3/8-NC X 1")	
21	106-204	2	BOLT (1/2 - NC X 1.50", SOC)	SEE FOOTNOTE 4
22	115-005	1	ZERK (1/4-NF, 90)	
23	142-109	1	HEADSHAFT SPROCKET HALF	INCLUDES 2 HALVES

## NOT SHOWN:

301-1871

SPROCKET 10T (1.686 2.160 ID)

OPTIONAL SPROCKET FOR SANDY SOIL

## FOOTNOTES:

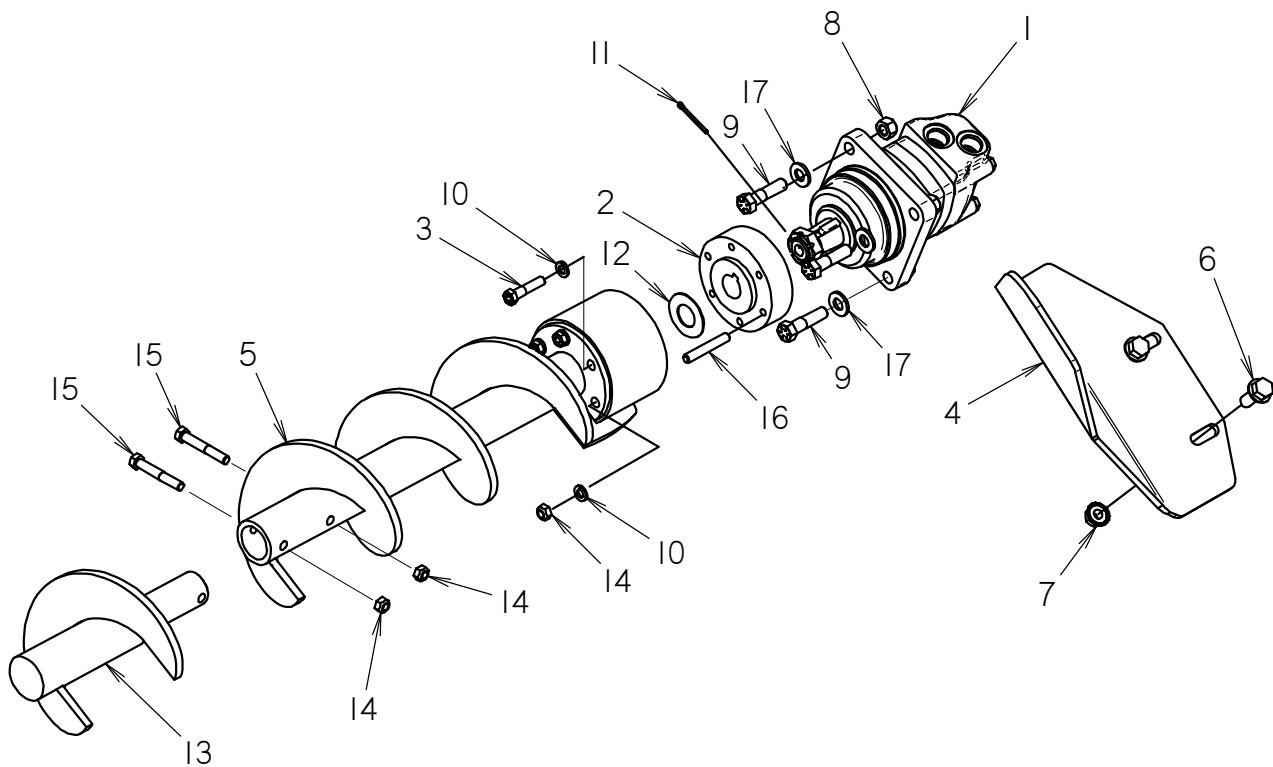
1. APPLY COUPLING GREASE 256-648 TO MOTOR SPLINES
2. HYDRAULIC MOTOR OPTIONS: 155-581 (11.9 CID), & 155-582 (14.9 CID)
3. SEAL REPAIR KIT 500-658
4. USE LOCTITE 242 OR EQUIVALENT
5. TORQUE TO 85 FT\*LBS

## NOTE:

ITEMS 7-9 &amp; 12-23 ARE INCLUDED IN HEADSHAFT KIT 190-1532.

# LOWER AUGER

1TR4, 1TRI



# LOWER AUGER

## 1TR4, 1TRI

REF NO.	PART NUMBER	QTY	DESCRIPTION	REMARKS
1	158-824	1	HYDRAULIC MOTOR	SEAL KIT 500-1428, SHAFT/BEARING KIT 500-2399
2	300-3586	1	AUGER DRIVE HUB	SEE FOOTNOTE 2
3	105-286	5	BOLT (3/8-NC X 1-3/4")	
4	300-3461	1	SPOILS FLAP ADJUSTABLE	
5	300-3472	1	LOWER AUGER (6" X 19")	
6	105-830	2	FLG LK BOLT (1/2-NC X 1-1/4")	
7	105-833	1	FLG LOCKNUT (1/2-NC)	
8	105-065	4	LOCKNUT (1/2-NC)	
9	105-871	3	BOLT (1/2-NC X 2" GD8)	TORQUE TO 75 FT/LBS
10	105-072	6	LOCK WASHER (3/8")	
11	105-518	1	COTTER PIN (1.25 X 1.500)	
12	110-171	1	MACHINERY BUSHING	
13	300-3531	1	AUGER EXTENSION	SEE FOOTNOTE 1
14	105-047	3	LOCKNUT (3/8-NC)	
15	105-183	2	SCREW (3/8-NC X 2-1/2", GD8)	
16	105-1209	1	STUD (3/8-16 X 2-1/2")	
17	106-743	3	WASHER (.531", HARDENED)	

NOT SHOWN:

FOOTNOTES:

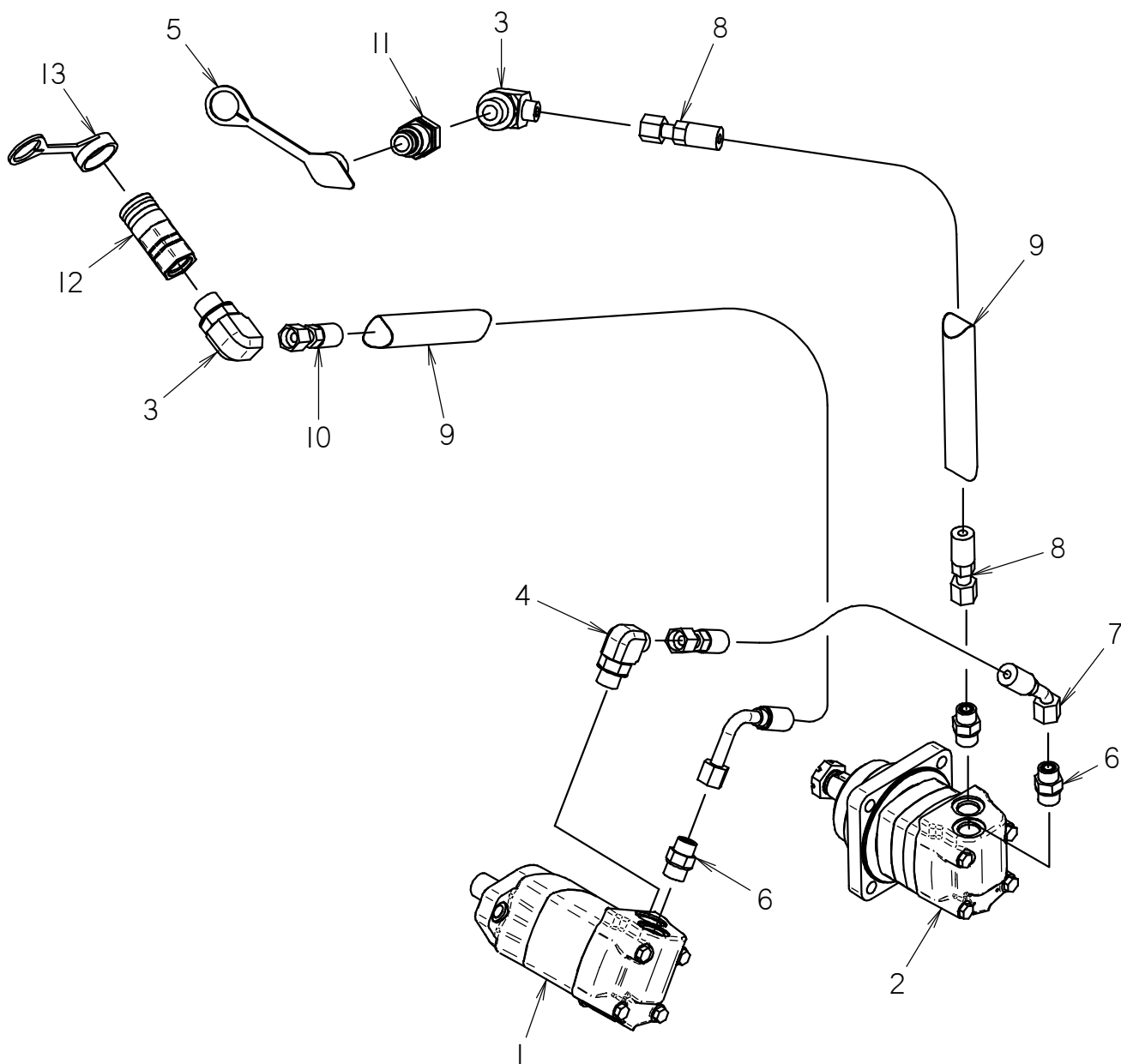
- 1- AUGER EXTENSION KIT P/N 190-1168 COMES WITH REF #14 AND 15.
- 2- P/N 300-4474 HUB PULLER, IS AVAILABLE FOR HUB REMOVAL.

NOTE:

**MOTOR HYDRAULICS - 1TR4, SK4TR**

BEGINS WITH S/N: CMW1TR4XCA0000460

BEGINS WITH S/N: CMWSK4TRVA0000084





**MOTOR HYDRAULICS - 1TR4, SK4TR**

BEGINS WITH S/N: CMW1TR4XCA0000460

BEGINS WITH S/N: CMWSK4TRVA0000084

REF NO.	PART NUMBER	QTY	DESCRIPTION	REMARKS
1	155-581	1	HYD MOTOR	SEE FOOTNOTE 2
2	158-824	1	HYDRAULIC MOTOR	
3	154-236	2	CONNECTOR (080-12S90)	
4	154-322	1	CONNECTOR (080-10S90)	
5	159-870	1	DUST CAP	
6	154-279	2	CONNECTOR (080-10S)	
7	150-1623	1	HOSE (080FX45-9"-3000)	
8	154-759	1	HOSE (080FX-36"-3000)	SEE FOOTNOTE 1
9	117-245	2	ABRASION SLEEVE (1.25" X 33")	SEE FOOTNOTE 1
10	154-907	1	HOSE (080FX90-32"-3000)	SEE FOOTNOTE 1
11	159-351	1	QDC BODY (08-12SF)	
12	159-350	1	QDC ADAPTER (08-12SF)	
13	159-871	1	DUST CAP	

NOT SHOWN:

## FOOTNOTES:

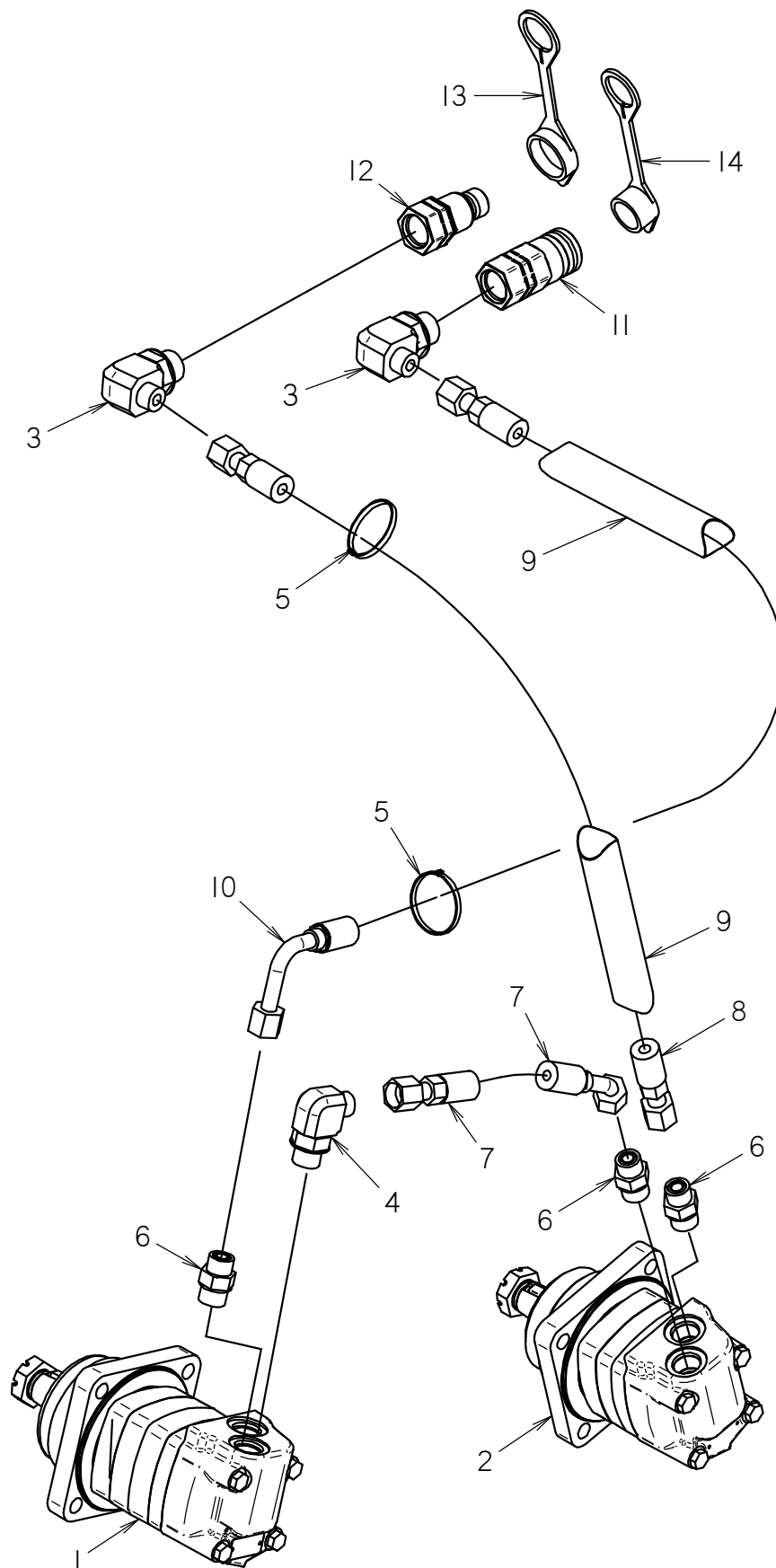
- 1- WHEN MOUNTING ITR4 TRENCHER WITH THE SK ADAPTER OPTION, USE HOSE KIT 190-1284, HOSE KIT 190-1284 REPLACES REF #'S 8-10.  
 2- HYDRAULIC MOTOR OPTIONS: 155-581 (11.9 CID), & 155-582 (14.9 CID)

## NOTE:

REFER TO O-RING CHART 800-301 IN BACK OF BOOK FOR REPLACEMENT OF O-RINGS

# MOTOR HYDRAULICS

1TR4, SK4TR



# MOTOR HYDRAULICS

## 1TR4, SK4TR

REF NO.	PART NUMBER	QTY	DESCRIPTION	REMARKS
1	150-1336	1	HYDRAULIC MOTOR	USES SEAL KIT 500-1428 & SHAFT AND BEARING KIT 500-2399
2	158-824	1	HYDRAULIC MOTOR	USES SEAL KIT 500-1428 & SHAFT AND BEARING KIT 500-2399
3	154-236	2	CONNECTOR (080-12S90)	
4	154-322	1	CONNECTOR (080-10S90)	
5	110-030	2	CABLE TIE (1/16" TO 4")	
6	154-279	3	CONNECTOR (080-10S)	
7	150-1623	1	HOSE (080FX45-9"-3000)	
8	154-759	1	HOSE (080FX-36"-3000)	SEE FOOTNOTES 1 & 2
9	117-245	2	ABRASION SLEEVE (1.25" X 33')	SEE FOOTNOTES 1 & 2
10	154-907	1	HOSE (080FX90-32"-3000)	SEE FOOTNOTES 1 & 2
11	159-350	1	QDC ADAPTER (08-12SF)	
12	159-351	1	QDC BODY (08-12SF)	
13	159-871	1	DUST CAP	
14	159-870	1	DUST CAP	

NOT SHOWN:

**FOOTNOTES:**

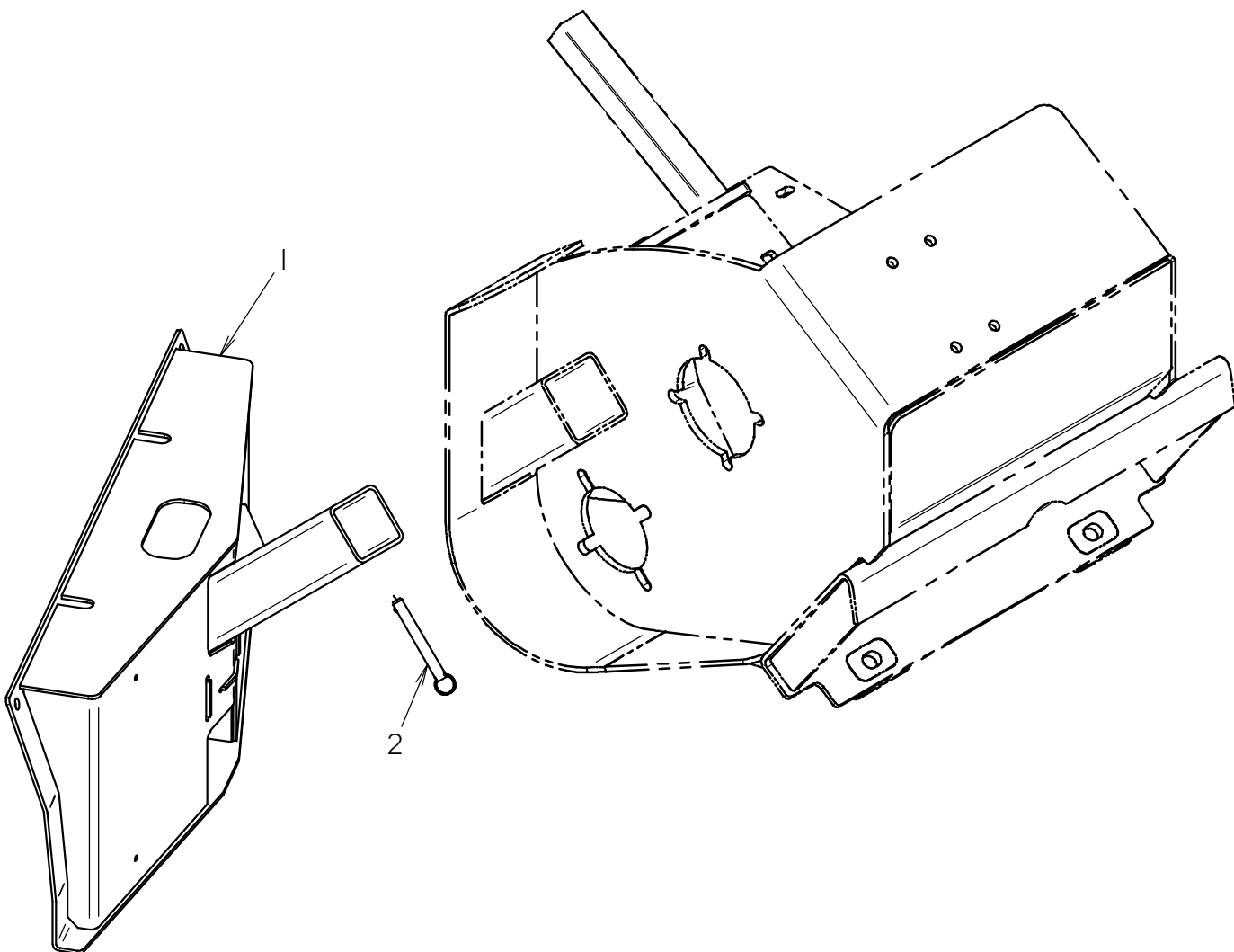
1. WHEN MOUNTING ITR4 TRENCHER WITH THE SK ADAPTER OPTION, USE HOSE KIT 190-1284, HOSE KIT 190-1284 REPLACES REF #'S 8-10.
2. WHEN MOUNTING SK4TR ON SK UNITS, USE HOSE KIT 190-1357. KIT INCLUDES HOSE 154-676 @ 2X AND ABRASION SLEEVE 117-189 @ 2X. THESE REPLACE REF #'S 8-10.

**NOTE:**

REFER TO O-RING CHART 800-301 IN BACK OF BOOK FOR REPLACEMENT OF O-RINGS

# BACKFILL BLADE

1TR4, SK4TR



# BACKFILL BLADE

## 1TR4, SK4TR

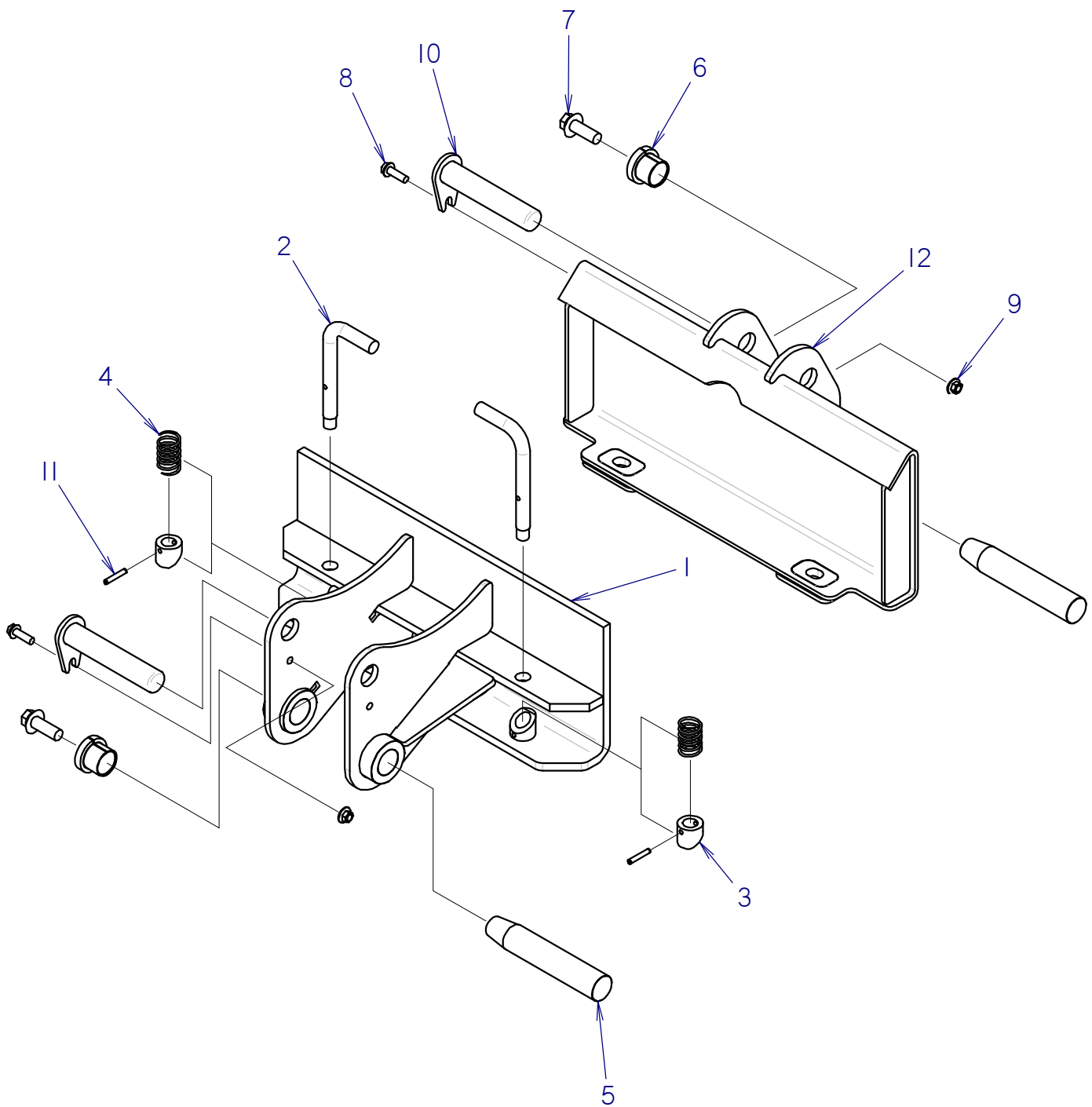
REF NO.	PART NUMBER	QTY	DESCRIPTION	REMARKS
	190-1322	-	BACKFILL BLADE KIT	INCLUDES REF # 1 AND 2
1	300-7189	1	BACKFILL BLADE	
2	300-4366	1	PULL PIN (1/2" X 4")	

NOT SHOWN:

FOOTNOTES:

NOTE:

# SK ATTACH PLATE TRACKS AND SMALL LIFT



## SK ATTACH PLATE TRACKS AND SMALL LIFT

REF NO.	PART NUMBER	QTY	DESCRIPTION	REMARKS
	350-2528		SK EXTENDED ATTACHMENT AND RECEIVER	INCLUDES 350-2526 AND 350-2527 (NOT SHOWN)
1	301-0659	1	ATTACHMENT PLATE, EXTENDED	
2	300-5003	2	LOCK PIN	
3	179-651	2	LOCK PIN BUSHING	
4	118-424	2	COMPRESSION SPRING	
5	178-419	2	TAPERED PIN (38.1MM X 208MM)	
6	181-974	2	TAPERED INSERT (1.5")	
7	107-336	2	FLG SCREW (M16-2.00X45MM,10.9)	
8	105-827	2	FLG LK BOLT (3/8-NC X 1-1/4")	
9	105-814	2	FLG LOCKNUT (3/8-NC)	
10	300-3468	2	TAB PIN (1.25 X 6.38)	
11	105-510	2	ROLL PIN (1/4" X 1-1/2")	
12	300-4610	1	SK RECEIVER PLATE	NOT FOR USE WITH TRENCHER. ORDER 302-1483 WHEN USING TRENCHER

NOT SHOWN:

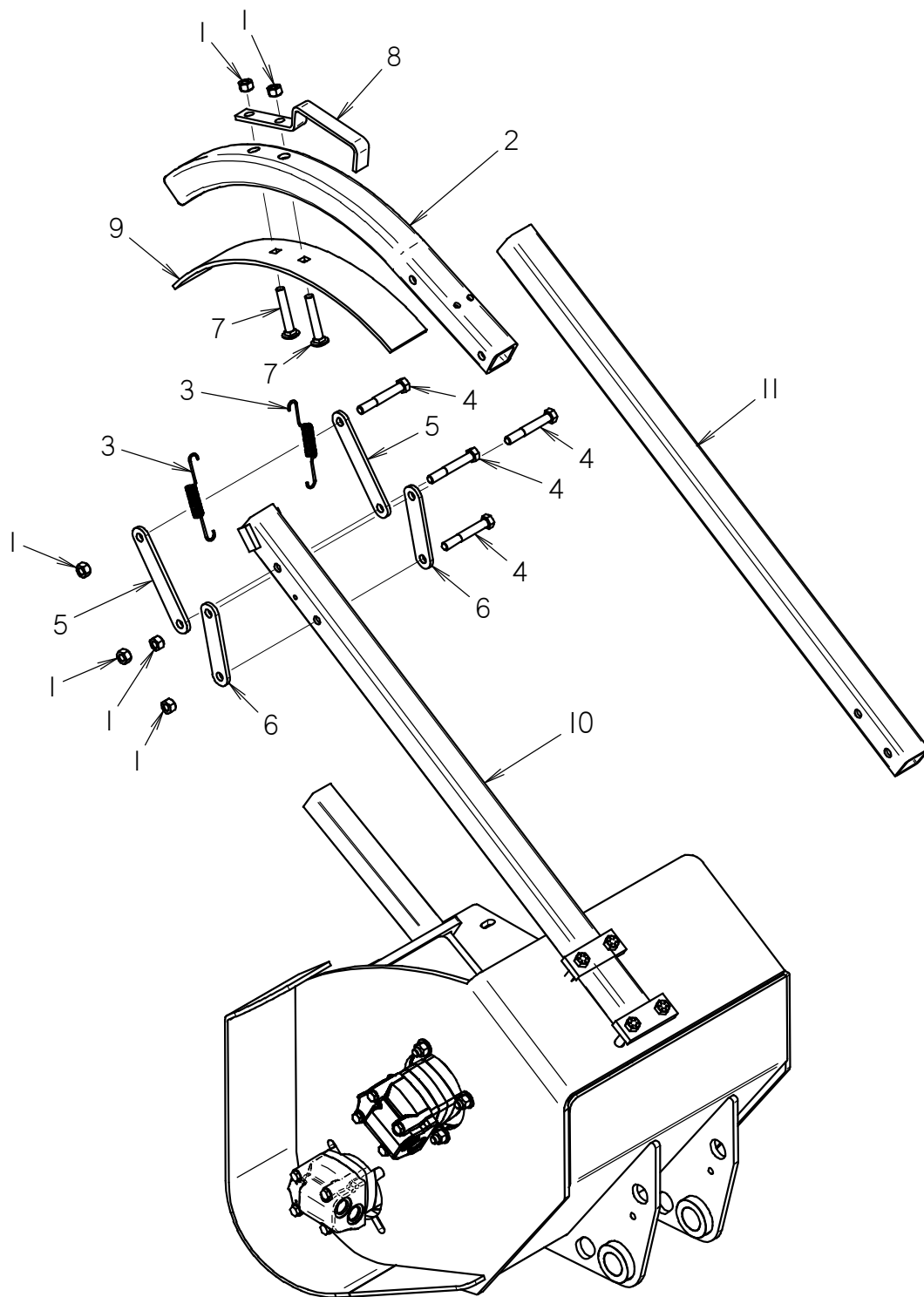
350-2527	SK RECEIVER ASSEMBLY	INCLUDES REF No's 5 THRU 10, AND 12
350-2526	SK ATTACH PLATE (TRACKS AND SMALL LIFT)	INCLUDES REF No's 1 THRU 11

FOOTNOTES:

NOTE:

# TRENCH CLEANER

1TR4, SK4TR





# TRENCH CLEANER

## 1TR4, SK4TR

REF NO.	PART NUMBER	QTY	DESCRIPTION	REMARKS
	100-180	-	MECHANICAL CLEANER CONVERSION KIT	INCL. REF #S 1-8
1	105-065	6	LOCKNUT (1/2-NC)	
2	141-287	1	SHOE BEAM	
3	116-709	2	EXTENSION SPRING	
4	107-262	4	LK BOLT (1/2-NC X 3-1/2",GD8)	
5	141-289	2	REAR LINK	
6	141-288	2	FRONT LINK	
7	105-279	2	CARRIAGE BOLT (1/2-NCX3.00")	
8	320-425	1	GRAB HANDLE	
9	141-290	1	CLEANER SHOE (4")	SEE FOOTNOTE 1
10	300-4651	1	CLEANER BAR	SEE FOOTNOTE 2
11	141-337	1	PERSONEL RESTRAINT BAR	SEE FOOTNOTE 3

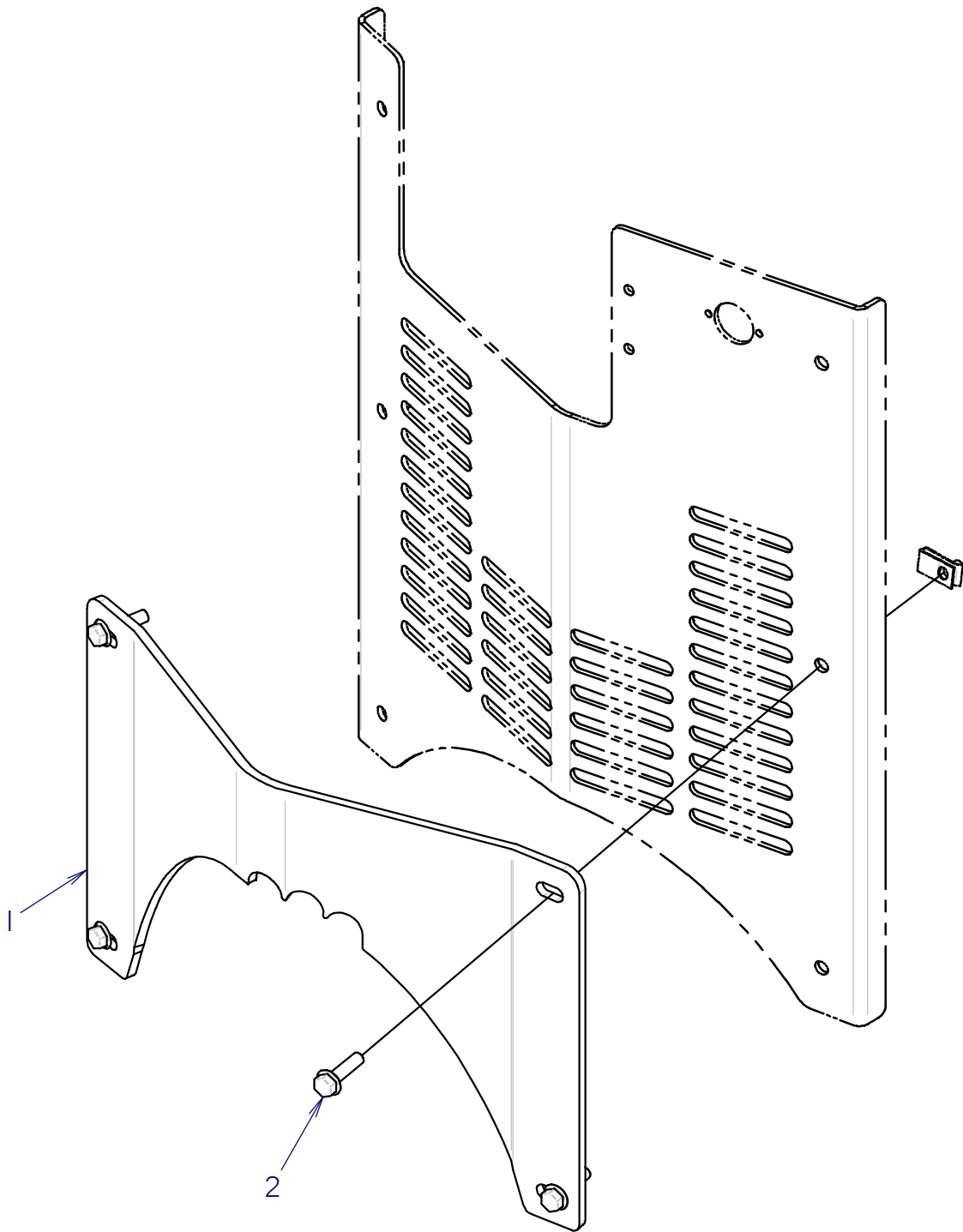
NOT SHOWN:

FOOTNOTES:

- 1- CLEANER SHOE OPTIONS 4" 141-290, 6" 141-134, 8" 141-135, 10" 141-136, 12" 141-137.
- 2- CLEANER BAR OPTIONS 24" DEPTH 300-4651, 30" DEPTH 300-4653, 36" DEPTH 300-4653, 48" DEPTH 300-4660.
- 3 - RESTRAINT BAR OPTIONS 24" DEPTH 141-337, 30" DEPTH 141-755, 36" DEPTH 141-156, 48" DEPTH 141-157

NOTE:

# SINGLE POINT LIFT



# SINGLE POINT LIFT

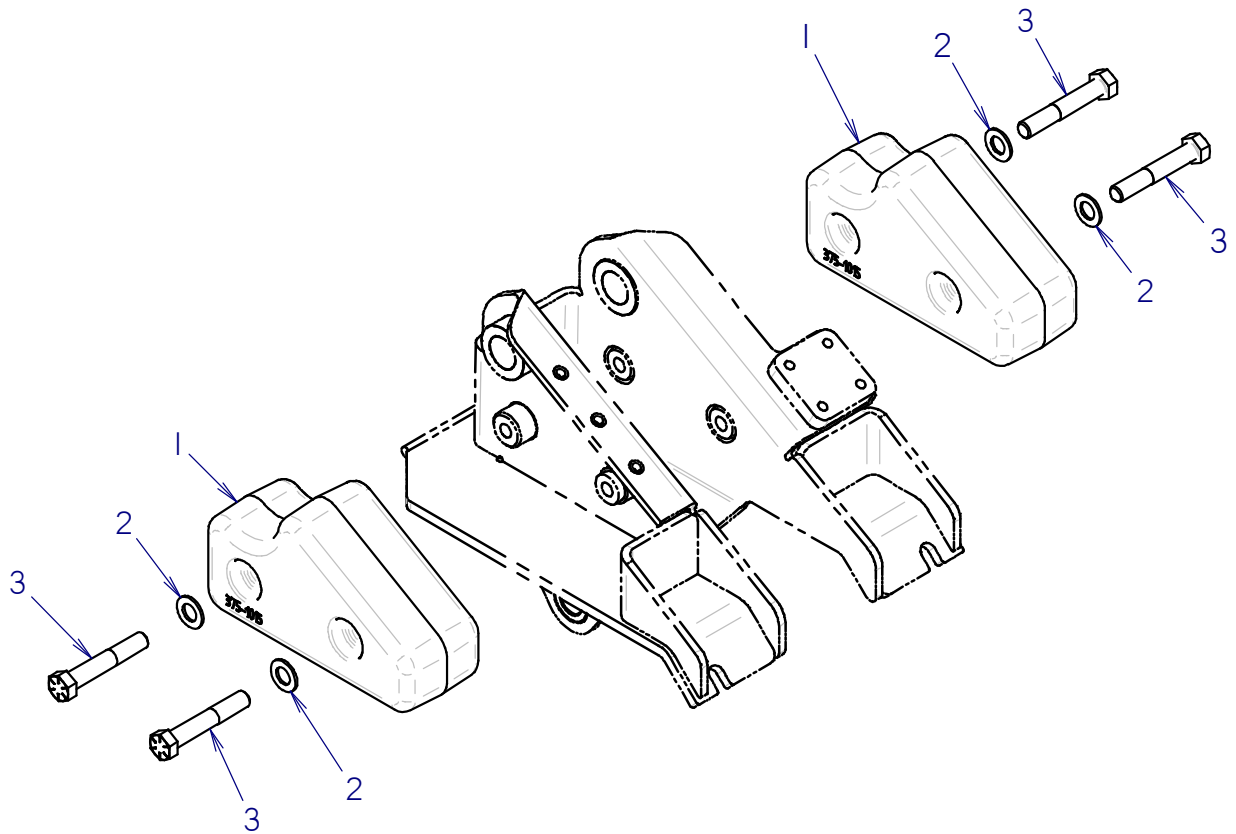
REF NO.	PART NUMBER	QTY	DESCRIPTION	REMARKS
	190-1265	-	SINGLE POINT LIFT KIT	INCLUDES REF #S 1 AND 2
1	300-5004	1	LIFT PLATE	
2	105-866	4	FLG LK BOLT (5/16-NC X 1.250")	

NOT SHOWN:

FOOTNOTES:

NOTE:

## COUNTER WEIGHT



# COUNTER WEIGHT

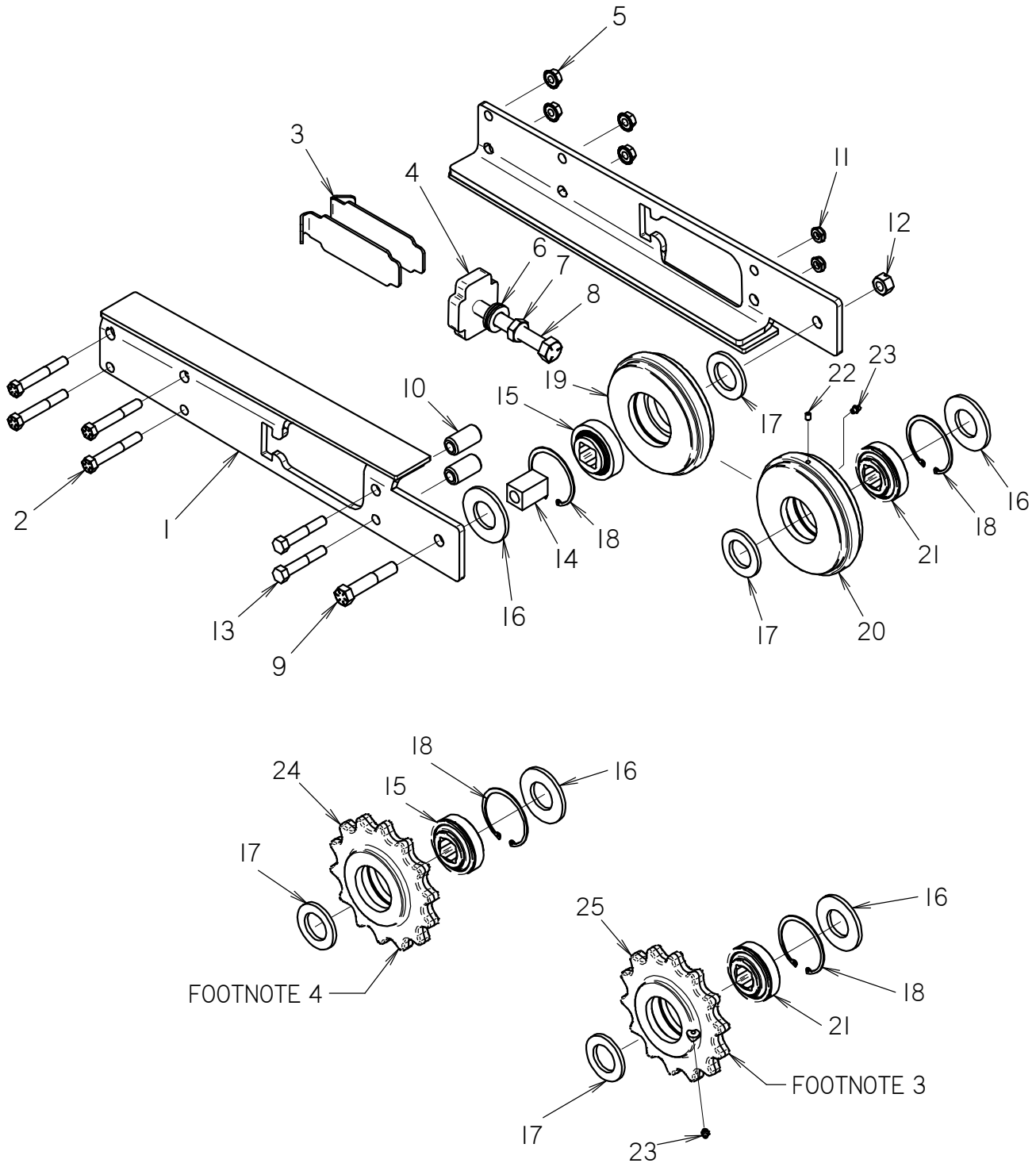
REF NO.	PART NUMBER	QTY	DESCRIPTION	REMARKS
1	375-1015	2	CAST WEIGHT	
2	106-949	4	WASHER (3/4", HARDENED)	
3	105-550	4	BOLT (3/4-NC X 4-1/2", GD8)	

NOT SHOWN:

FOOTNOTES:

NOTE:

# 24" SPLIT BOOM ASSY



FOOTNOTE 4

FOOTNOTE 3

## 24" SPLIT BOOM ASSY

REF NO.	PART NUMBER	QTY	DESCRIPTION	REMARKS
1	140-1158	2	ABRASION RESISTANT SPLIT BOOM, 24"	
2	105-136	4	BOLT (1/2-NC X 3-1/2", GD8)	
3	300-2687	2	SPACER	
4	300-2685	1	ADJUSTMENT BLOCK	
5	105-833	4	FLG LOCKNUT (1/2-NC)	
6	105-975	3	WASHER (3/4")	
7	105-310	1	JAM NUT (3/4-NC)	
8	106-073	1	BOLT (3/4-NC X 6")	
9	106-212	1	BOLT (5/8-NC X 3-1/2")	
10	300-2686	2	TUBE SPACER	
11	106-301	2	LOCKNUT (1/2-NC, NLK)	
12	105-357	1	LOCKNUT (5/8-NC)	
13	105-076	2	BOLT (1/2-NC X 3")	
14	300-2688	1	IDLER BLOCK	
15	125-009	1	BALL BEARING W/051-345 INSTR)	SEE FOOTNOTE 1
16	105-1126	2	DIRT SHIELD	SEE FOOTNOTE 1 & 2
17	105-1125	2	DIRT SHIELD	SEE FOOTNOTE 1 & 2
18	115-464	2	INTERNAL SNAP RING (3.149")	SEE FOOTNOTE 1 & 2
19	142-755	1	TAIL ROLLER (1.654"C6.8")	SEE FOOTNOTE 1
20	140-1102	1	TAIL ROLLER - RELUBRICABLE	SEE FOOTNOTE 2
21	125-1022	1	BALL BEARING RELUBRICABLE (1.125", SQ)	SEE FOOTNOTE 2
22	105-707	1	SET SCREW (1/4-NF X 3/8", CUP)	SEE FOOTNOTE 2
23	115-003	1	ZERK (1/4-NF, STR)	SEE FOOTNOTE 2
24	140-1298	1	LOW PROFILE SPROCKET, SEALED	SEE FOOTNOTE 4
25	140-1299	1	LOW PROFILE SPROCKET, GREASABLE	SEE FOOTNOTE 3

## NOT SHOWN:

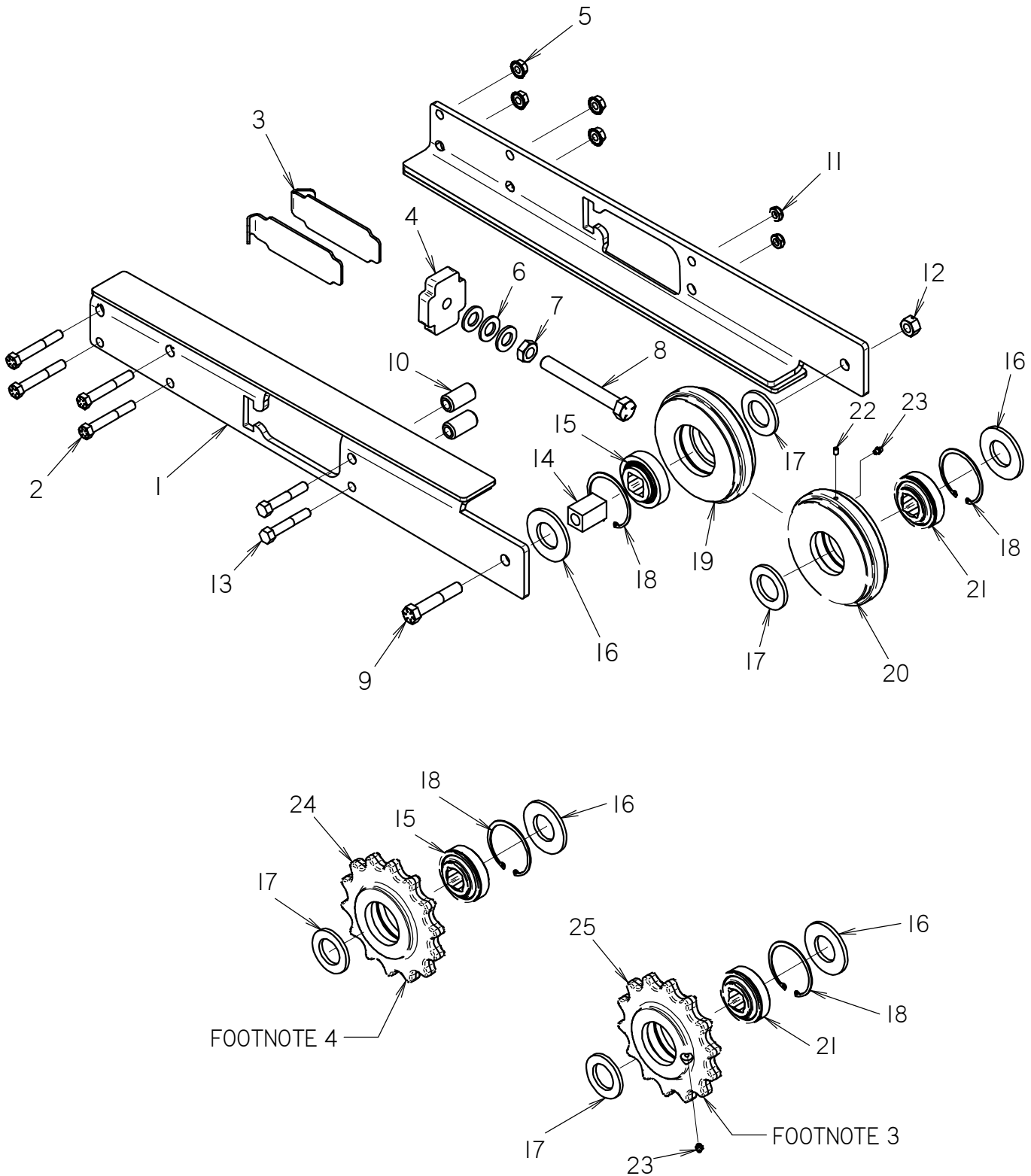
140-1162	24" SPLIT BOOM ASSY, ROLLER	INCLUDES REF. #S 1-19
140-1122	RELUBRICABLE - 24" SPLIT BOOM ASSY, ROLLER	INCLUDES REF. #S 1-13, 14, 16, 17, 18 & 20-23.
140-1101	24" SPLIT BOOM ASSY, SPROCKET-GREASEABLE	INCLUDES REF. #S 1-14, 16-18 21,23 & 25
140-1310	24" SPLIT BOOM ASSY, SPROCKET-SEALED	INCLUDES REF. #S 1-18 & 24

## FOOTNOTES:

1. 142-754 TAIL ROLLER (1.654"C6.8") INCLUDES REF NO.'S, 15-19.
2. 140-1104 TAIL ROLLER RELUBRICABLE INCLUDES REF NO.'S, 16-18, & 20-23.
3. 140-1290 LOW PROFILE SPROCKET ASSY, GREASEABLE - INCL REF #S 16, 17, 18, 21 & 23.
4. 140-1289 LOW PROFILE SPROCKET ASSY, SEALED - INCL REF #S 15, 16, 17 & 18

## NOTE:

# 30" SPLIT BOOM ASSY



FOOTNOTE 4

FOOTNOTE 3



## 30" SPLIT BOOM ASSY

REF NO.	PART NUMBER	QTY	DESCRIPTION	REMARKS
1	140-1161	2	ABRASION RESISTANT SPLIT BOOM, 30"	
2	105-136	4	BOLT (1/2-NC X 3-1/2", GD8)	
3	300-2687	2	SPACER	
4	300-2685	1	ADJUSTMENT BLOCK	
5	105-833	4	FLG LOCKNUT (1/2-NC)	
6	105-975	3	WASHER (3/4")	
7	105-310	1	JAM NUT (3/4-NC)	
8	106-073	1	BOLT (3/4-NC X 6")	
9	106-212	1	BOLT (5/8-NC X 3-1/2")	
10	300-2686	2	TUBE SPACER	
11	106-301	2	LOCKNUT (1/2-NC, NLK)	
12	105-357	1	LOCKNUT (5/8-NC)	
13	105-076	2	BOLT (1/2-NC X 3")	
14	300-2688	1	IDLER BLOCK	
15	125-009	1	BALL BEARING W/051-345 INSTR)	SEE FOOTNOTE 1
16	105-1126	2	DIRT SHIELD	SEE FOOTNOTE 1 & 2
17	105-1125	2	DIRT SHIELD	SEE FOOTNOTE 1 & 2
18	115-464	2	INTERNAL SNAP RING (3.149")	SEE FOOTNOTE 1 & 2
19	142-755	1	TAIL ROLLER (1.654"C6.8")	SEE FOOTNOTE 1
20	140-1102	1	TAIL ROLLER - RELUBRICABLE	SEE FOOTNOTE 2
21	125-1022	1	BALL BEARING RELUBRICABLE (1.125", SQ)	SEE FOOTNOTE 2
22	105-707	1	SET SCREW (1/4-NF X 3/8", CUP)	SEE FOOTNOTE 2
23	115-003	1	ZERK (1/4-NF, STR)	SEE FOOTNOTE 2
24	140-1298	1	LOW PROFILE SPROCKET, SEALED	SEE FOOTNOTE 3
25	140-1299	1	LOW PROFILE SPROCKET, GREASABLE	SEE FOOTNOTE 4

## NOT SHOWN:

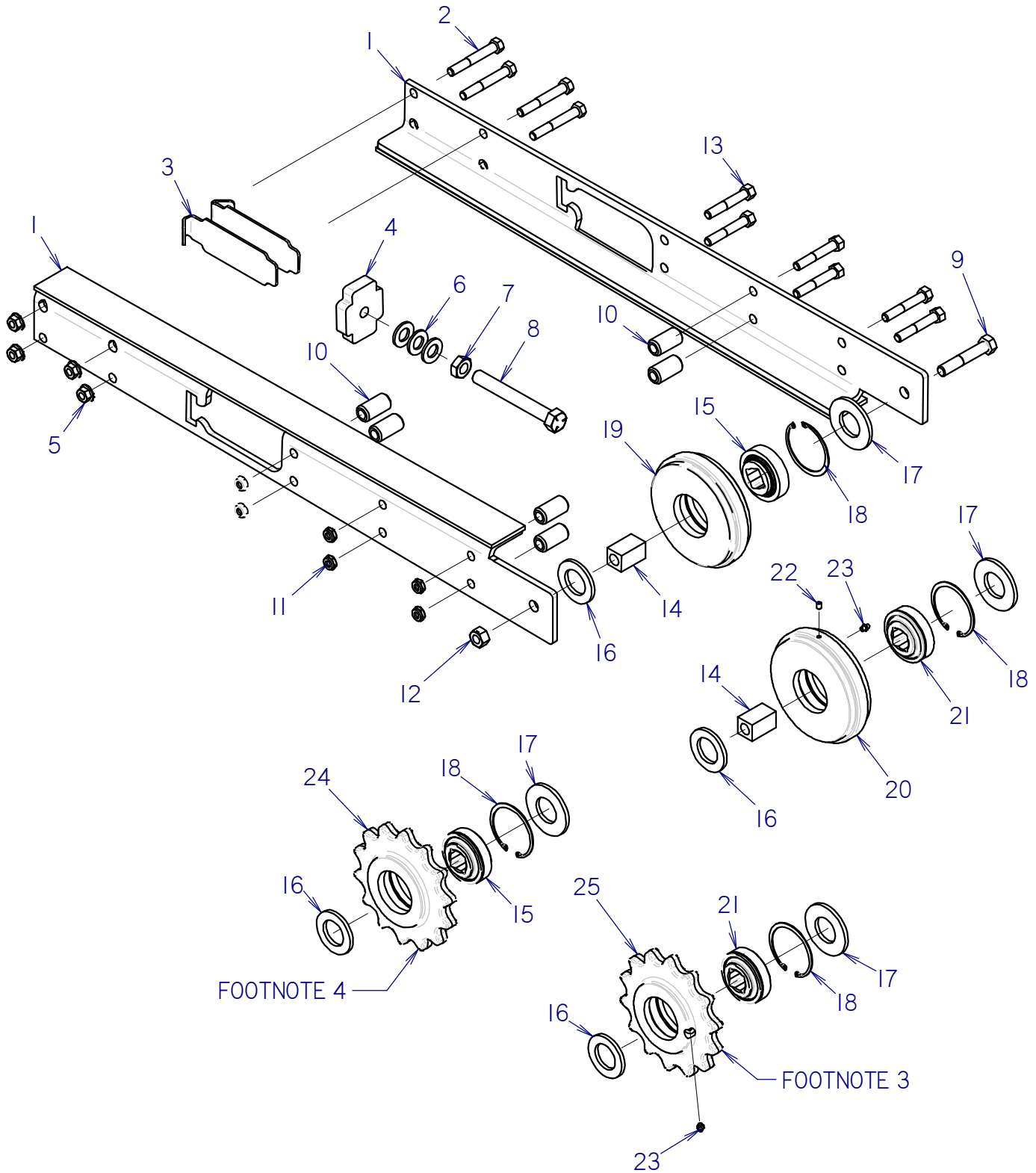
140-1163	30" SPLIT BOOM ASSY, ROLLER	INLC'S REF #1-19
140-1123	RELUBRICABLE - 30" SPLIT BOOM ASSY, ROLLER	INCLUDES REF. #S 1-13, 14, 16, 17, 18 & 20-23.
140-1100	30" SPLIT BOOM ASSY, SPROCKET, GREASEABLE	INCLUDES REF. #S 1-14 16-18, 21, 23 & 25
140-1100	30" SPLIT BOOM ASSY, SPROCKET, SEALED	INCLUDES REF. #S 1-18 & 24

## FOOTNOTES:

1. 142-754 TAIL ROLLER (1.654"C6.8") INCLUDES REF NO.'S 15-19.
2. 140-1104 TAIL ROLLER RELUBRICABLE INCLUDES REF NO.'S 16-18 & 20-23.
3. 140-1290 LOW PROFILE SPROCKET ASSY, GREASEABLE - INCL REF #S 16, 17, 18, 21 & 23.
4. 140-1289 LOW PROFILE SPROCKET ASSY, SEALED - INCL REF #S 15, 16, 17 & 18

## NOTE:

# 36" SPLIT BOOM ASSEMBLY



## 36" SPLIT BOOM ASSEMBLY

REF NO.	PART NUMBER	QTY	DESCRIPTION	REMARKS
1	140-1329	2	36" SPLIT BOOM SIDE	
2	105-136	4	BOLT (1/2-NC X 3-1/2", GD8)	
3	300-2687	2	SPACER	
4	300-2685	1	ADJUSTMENT BLOCK	
5	105-833	4	FLG LOCKNUT (1/2-NC)	
6	105-975	3	WASHER (3/4")	
7	105-310	1	JAM NUT (3/4-NC)	
8	106-073	1	BOLT (3/4-NC X 6")	
9	106-212	1	BOLT (5/8-NC X 3-1/2")	
10	300-2686	6	TUBE SPACER	
11	106-301	6	LOCKNUT (1/2-NC, NLK)	
12	105-357	1	LOCKNUT (5/8-NC)	
13	105-076	6	BOLT (1/2-NC X 3")	
14	300-2688	1	IDLER BLOCK	
15	125-009	1	BALL BEARING (W/051-345 INSTR)	SEE FOOTNOTE 1
16	105-1125	1	DIRT SHIELD	SEE FOOTNOTE 1 & 2
17	105-1126	1	DIRT SHIELD	SEE FOOTNOTE 1 & 2
18	115-464	1	INTERNAL SNAP RING (3.149")	SEE FOOTNOTE 1 & 2
19	142-755	1	TAIL ROLLER (1.654"C6.8")	SEE FOOTNOTE 1
20	140-1102	1	TAIL ROLLER - RELUBRICABLE	SEE FOOTNOTE 2
21	125-1022	1	BALL BEARING RELUBRICABLE (1.125", SQ)	SEE FOOTNOTE 2
22	105-707	1	SET SCREW (1/4-NF X 3/8", CUP)	SEE FOOTNOTE 2
23	115-003	1	ZERK (1/4-NF, STR)	SEE FOOTNOTE 2
24	140-1298	1	LOW PROFILE SPROCKET, SEALED	SEE FOOTNOTE 4
25	140-1299	1	LOW PROFILE SPROCKET, GREASABLE	SEE FOOTNOTE 3

### NOT SHOWN:

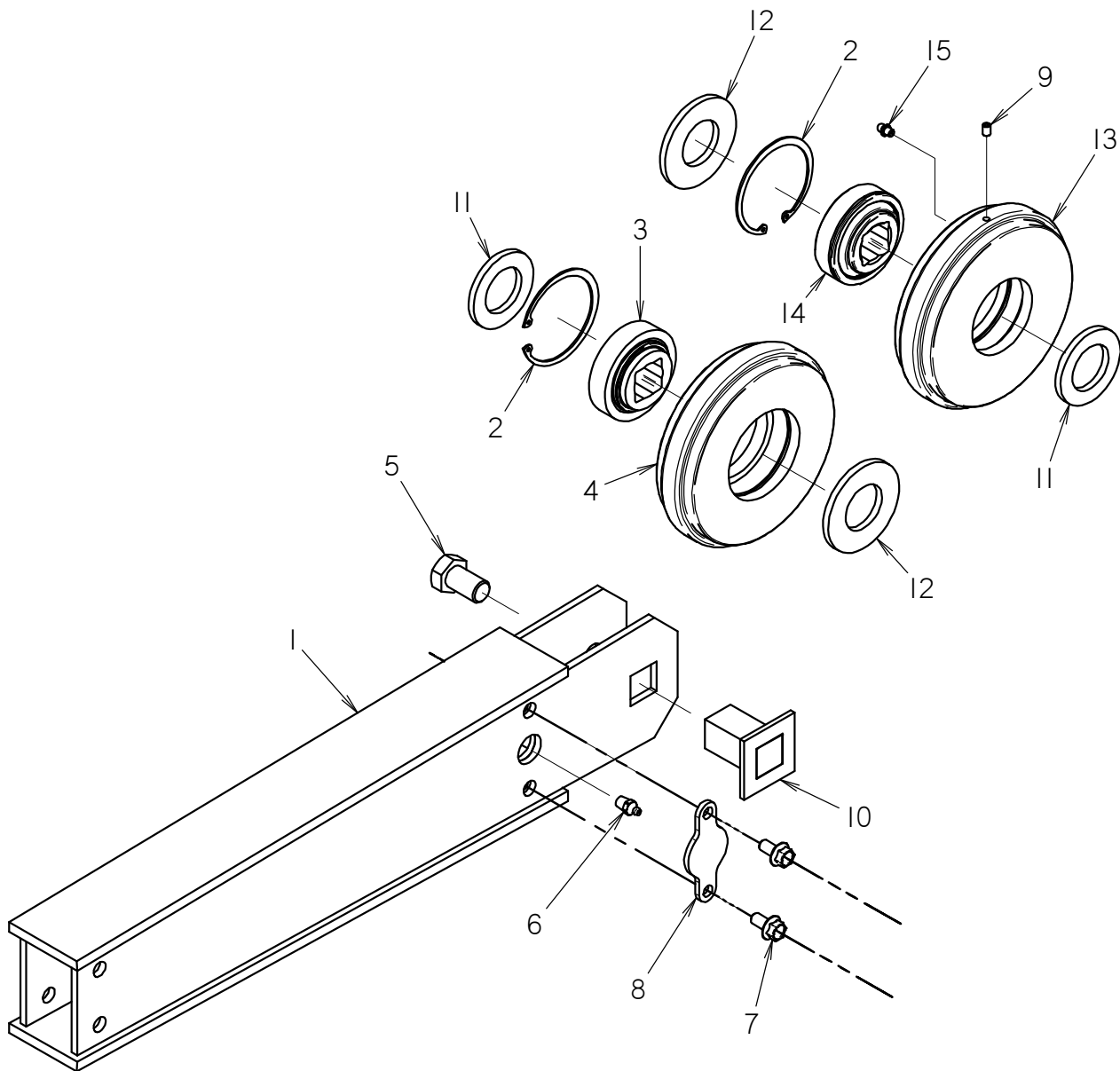
140-1334	36" SPLIT BOOM ASSY, ROLLER-SEALED	INCLUDES REF. #S 1-19
140-1333	36" SPLIT BOOM ASSY, ROLLER-GREASABLE	INCLUDES REF. #S 1-13, 14, 16, 17, 18 & 20-23.
140-1328	36" SPLIT BOOM ASSEMBLY, SPROCKET	INCLUDES REF. #S 1-14, 16-18 21,23 & 25
140-1332	36" SPLIT BOOM ASSY, SPROCKET, SEALED	INCLUDES REF. #S 1-18 & 24

### FOOTNOTES:

- 142-754 TAIL ROLLER (1.654"C6.8") INCLUDES REF NO.'S, 15-19.
- 140-1104 TAIL ROLLER RELUBRICABLE INCLUDES REF NO.'S, 16-18, & 20-23.
- 140-1290 LOW PROFILE SPROCKET ASSY, GREASEABLE - INCL REF #S 16, 17, 18, 21 & 23.
- 140-1289 LOW PROFILE SPROCKET ASSY, SEALED - INCL REF #S 15, 16, 17 & 18

### NOTE:

## GREASE BOOM, ROLLER



## GREASE BOOM, ROLLER

REF NO.	PART NUMBER	QTY	DESCRIPTION	REMARKS
1	140-1315	1	GREASE TENSION BOOM, 24"	140-1316 (30"), 140-1317 (36"), SEE FOOTNOTE 2
2	115-464	2	INTERNAL SNAP RING (3.149")	EACH ROLLER ASSEMBLY REQUIRES ONE 115-464. - SEE FOOTNOTE 3
3	125-009	1	BALL BEARING (W/051-345 INSTR)	SEE FOOTNOTE 1
4	142-755	1	TAIL ROLLER (1.654"C6.8")	SEE FOOTNOTE 1
5	105-379	1	LK BOLT (3/4-NC X 1-1/4", NLK)	
6	115-024	1	ZERK (02N, 5000)	
7	105-825	2	FLG LK BOLT (3/8-NC X 3/4)	
8	319-410	1	ZERK COVER	
9	105-707	1	SET SCREW (1/4-NF X 3/8", CUP)	SEE FOOTNOTE 3
10	180-445	1	IDLER SHAFT (1.125"SQ X1.937")	
11	105-1125	2	DIRT SHIELD	EACH ROLLER ASSEMBLY REQUIRES ONE 105-1125. - SEE FOOTNOTE 3
12	105-1126	2	DIRT SHIELD	EACH ROLLER ASSEMBLY REQUIRES ONE 105-1126. - SEE FOOTNOTE 3
13	140-1102	1	TAIL ROLLER - RELUBRICABLE	SEE FOOTNOTE 3
14	125-1022	1	BALL BEARING RELUBRICABLE (1.125", SQ)	SEE FOOTNOTE 3
15	115-003	1	ZERK (1/4-NF, STR)	SEE FOOTNOTE 3

### NOT SHOWN:

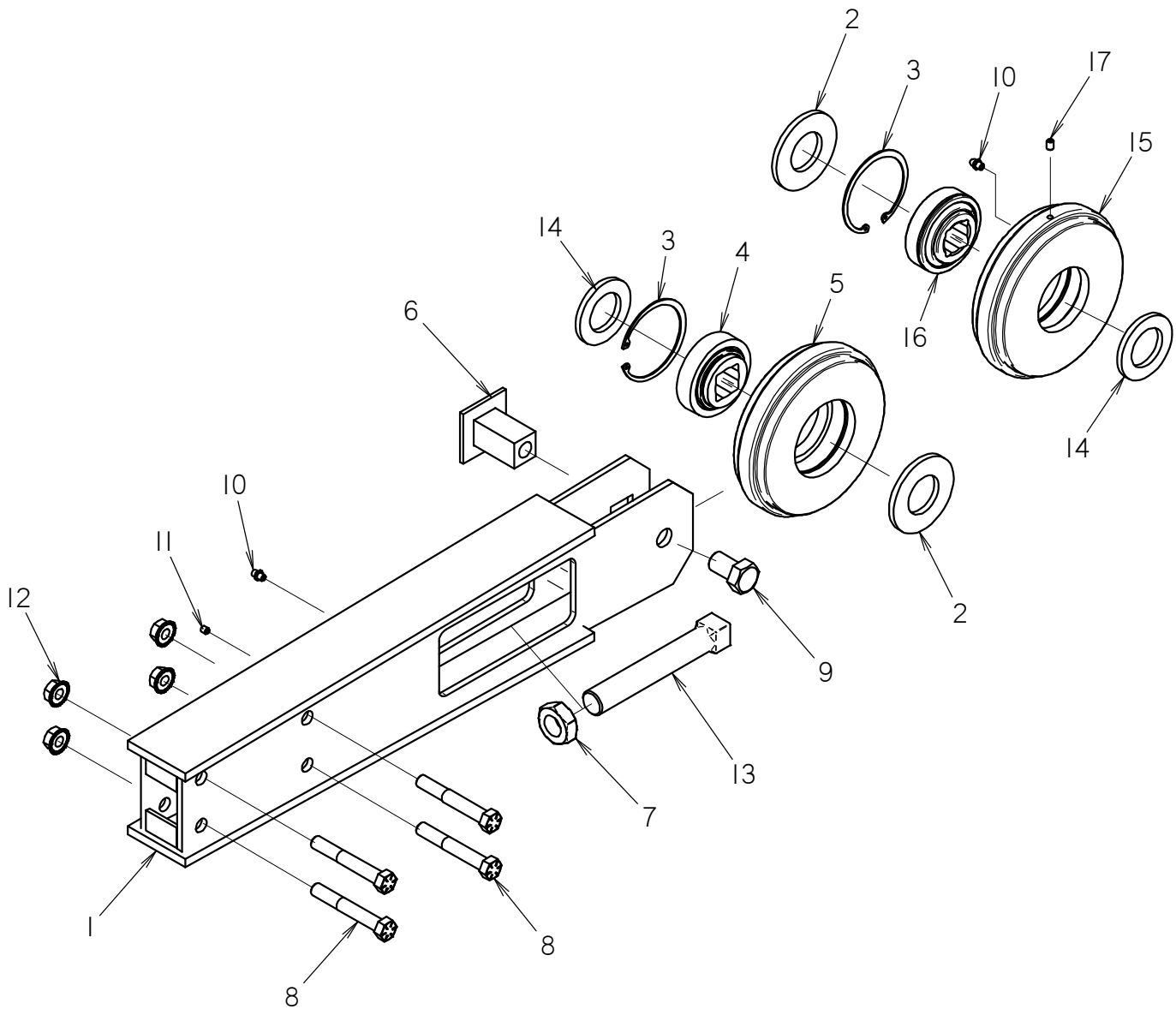
141-794	GREASE BOOM ASM (24")-W/STD. ROLLER 142-754	SEE FOOTNOTE 1 & 2
141-795	GREASE BOOM ASM (30")-W/STD. ROLLER 142-754	SEE FOOTNOTE 1 & 2
141-796	GREASE BOOM ASM (36")-W/STD. ROLLER 142-754	SEE FOOTNOTE 1 & 2
140-1114	GREASE BOOM ASM (24")-W/RELUBRICABLE ROLLER 140-1104	SEE FOOTNOTE 2 & 3
140-1115	GREASE BOOM ASM (30")-W/RELUBRICABLE ROLLER 140-1104	SEE FOOTNOTE 2 & 3
140-1116	GREASE BOOM ASM (36")-W/RELUBRICABLE ROLLER 140-1104	SEE FOOTNOTE 2 & 3

### FOOTNOTES:

1. 142-754 TAIL ROLLER ASSEMBLY INCL. REF #'S 2-4, 12 & 11.
2. 141-794 GREASE BOOM ASSEMBLY (24") INCL. REF #'S 1-12.  
141-795 GREASE BOOM ASSEMBLY (30") INCL. REF #'S 1-12.  
141-796 GREASE BOOM ASSEMBLY (36") INCL. REF #'S 1-12.  
140-1114 GREASE BOOM ASSEMBLY (24"), RELUBRICABLE, INCL. REF #'S 1-2 & 5-16.  
140-1115 GREASE BOOM ASSEMBLY (30"), RELUBRICABLE, INCL. REF #'S 1-2 & 5-16.  
140-1116 GREASE BOOM ASSEMBLY (36"), RELUBRICABLE, INCL. REF #'S 1-2 & 5-16.
3. 140-1104 TAIL ROLLER ASSEMBLY-RELUBRICABLE INCL'S REF #'S 2, 11-16.

### NOTE:

## ROLLER BOOM



# ROLLER BOOM

REF NO.	PART NUMBER	QTY	DESCRIPTION	REMARKS
1	301-8280	1	ROLLER BOOM (24")	301-8211 (30"), 301-8215 (36"), 301-8202 (42"), 301-8238 (42") - F/N 2
2	105-1126	2	DIRT SHIELD	EACH ROLLER ASSEMBLY REQUIRES ONE 105-1126 - SEE F/N 1 & 3
3	115-464	2	INTERNAL SNAP RING (3.149")	EACH ROLLER ASSEMBLY REQUIRES ONE 115-464 - SEE F/N 1 & 3
4	125-009	1	BALL BEARING (W/051-345 INSTR)	SEE FOOTNOTE 1
5	142-755	1	TAIL ROLLER (1.654"C6.8")	SEE FOOTNOTE 1
6	180-445	1	IDLER SHAFT (1.125"SQ X1.937")	
7	106-033	1	JAM NUT (1-NC)	
8	105-136	4	BOLT (1/2-NC X 3-1/2", GD8)	
9	105-379	1	LK BOLT (3/4-NC X 1-1/4", NLK)	
10	115-003	2	ZERK (1/4-NF, STR)	SEE FOOTNOTE 1 FOR QTY= 1
11	105-668	1	SET SCREW (1/4-NF X 1/4", CUP)	
12	105-833	4	FLG LOCKNUT (1/2-NC)	
13	106-034	1	SET SCREW (1-NC X 6", SQ)	
14	105-1125	2	DIRT SHIELD	EACH ROLLER ASSEMBLY REQUIRES ONE 105-1125 - SEE F/N 1 & 3
15	140-1102	1	TAIL ROLLER - RELUBRICABLE	SEE FOOTNOTE 3
16	125-1022	1	BALL BEARING RELUBRICABLE (1.125", SQ)	SEE FOOTNOTE 3
17	105-707	1	SET SCREW (1/4-NF X 3/8", CUP)	SEE FOOTNOTE 3

**NOT SHOWN:**

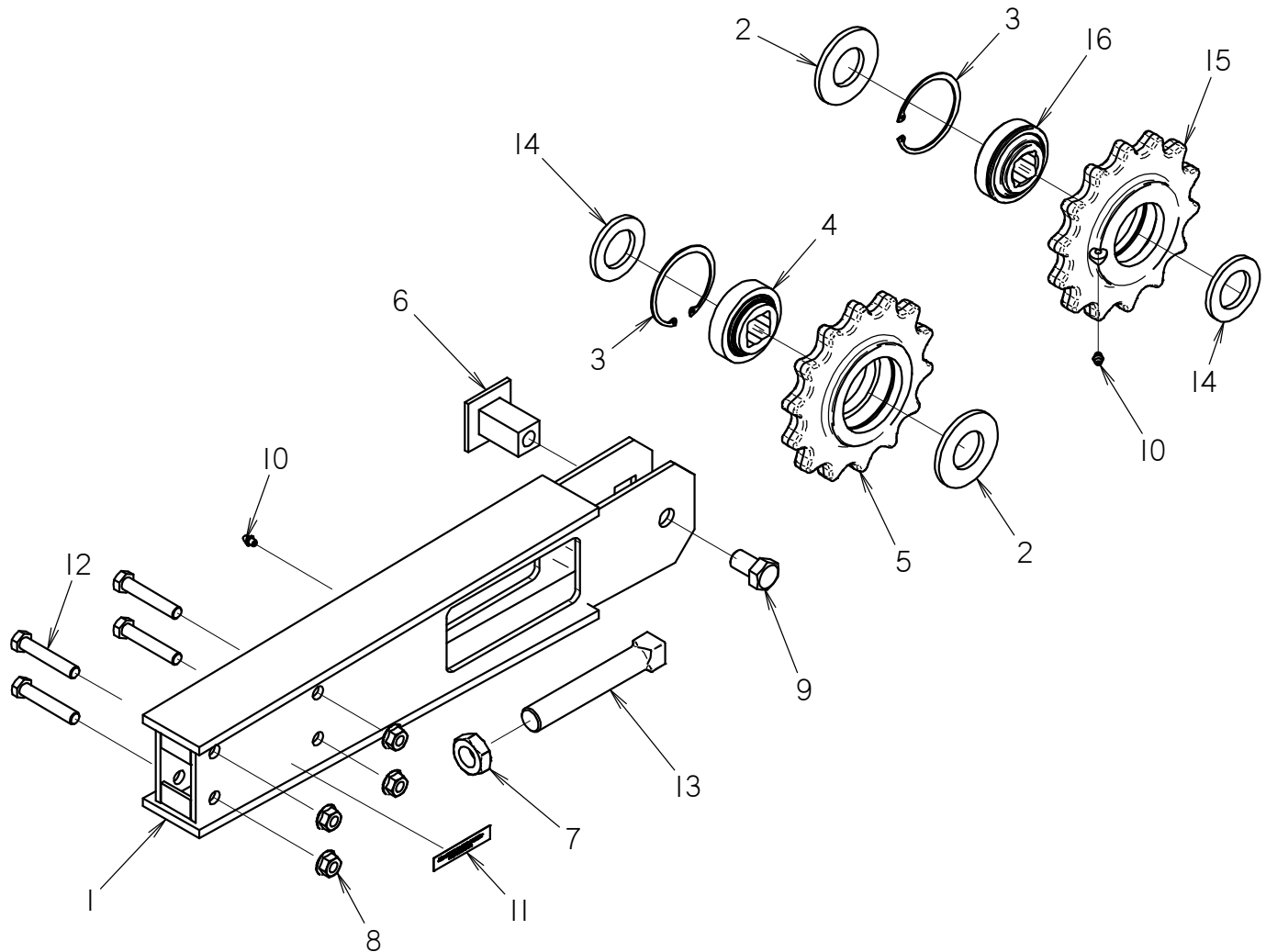
141-792	ROLLER BOOM ASSEMBLY (24") W/STD. ROLLER 142-754	SEE FOOTNOTE 1 & 2
141-793	ROLLER BOOM ASSEMBLY (30") W/STD. ROLLER 142-754	SEE FOOTNOTE 1 & 2
141-791	ROLLER BOOM ASSEMBLY (36") W/STD. ROLLER 142-754	SEE FOOTNOTE 1 & 2
140-1240	ROLLER BOOM ASSEMBLY (42") W/STD. ROLLER 142-754	SEE FOOTNOTE 1 & 2
140-531	ROLLER BOOM ASSEMBLY (48") W/STD. ROLLER 142-754	SEE FOOTNOTE 1 & 2
140-1112	ROLLER BOOM ASSEMBLY (24") W/RELUBRICABLE ROLLER 140-1104	SEE FOOTNOTE 2 & 3
140-1113	ROLLER BOOM ASSEMBLY (30") W/RELUBRICABLE ROLLER 140-1104	SEE FOOTNOTE 2 & 3
140-1111	ROLLER BOOM ASSEMBLY (36") W/RELUBRICABLE ROLLER 140-1104	SEE FOOTNOTE 2 & 3
140-1285	ROLLER BOOM ASSEMBLY (42") W/RELUBRICABLE ROLLER 140-1104	SEE FOOTNOTE 2 & 3
140-1106	ROLLER BOOM ASSEMBLY (48") W/RELUBRICABLE ROLLER 140-1104	SEE FOOTNOTE 2 & 3

**FOOTNOTES:**

- 142-754 TAIL ROLLER ASSEMBLY, INCL. REF #S 2-5, 14
- 141-792 ROLLER BOOM ASSEMBLY (24"), INCL. REF #S 1-14  
 141-793 ROLLER BOOM ASSEMBLY (30"), INCL. REF #S 1-14  
 141-791 ROLLER BOOM ASSEMBLY (36"), INCL. REF #S 1-14  
 140-1240 ROLLER BOOM ASSEMBLY (42"), INCL. REF #S 1-14  
 140-531 ROLLER BOOM ASSEMBLY (48"), INCL. REF #S 1-14  
 140-1112 ROLLER BOOM ASSEMBLY (24"), INCL. REF #S 1-3 & 6-17  
 140-1113 ROLLER BOOM ASSEMBLY (30"), INCL. REF #S 1-3 & 6-17  
 140-1111 ROLLER BOOM ASSEMBLY (36"), INCL. REF #S 1-3 & 6-17  
 140-1285 ROLLER BOOM ASSEMBLY (42"), INCL. REF #S 1-3 & 6-17  
 140-1106 ROLLER BOOM ASSEMBLY (48"), INCL. REF #S 1-3 & 6-17
- 140-1104 TAIL ROLLER ASSEMBLY-RELUBRICABLE INCL'S REF #S: 2, 3, 10 & 14 THRU 17.

**NOTE:**

## LOW PROFILE SPROCKET BOOM





## LOW PROFILE SPROCKET BOOM

REF NO.	PART NUMBER	QTY	DESCRIPTION	REMARKS
1	301-8280	1	ROLLER BOOM (24")	301-8211 (30") 301-8215 (36") 301-8202 (42") 301-8238 (48") - F/N 2
2	105-1126	2	DIRT SHIELD	EACH ROLLER ASSY REQUIRES ONE 105-1126 - SEE F/N 1 & 3
3	115-464	2	INTERNAL SNAP RING (3.149")	EACH ROLLER ASSY REQUIRES ONE 115-464 - SEE F/N 1 & 3
4	125-009	1	BALL BEARING (W/051-345 INSTR)	SEE FOOTNOTE 1
5	140-1298	1	LOW PROFILE SPROCKET, SEALED	SEE FOOTNOTE 1
6	180-445	1	IDLER SHAFT (1.125"SQ X1.937")	
7	106-033	1	JAM NUT (1-NC)	
8	105-833	4	FLG LOCKNUT (1/2-NC)	
9	105-379	1	LK BOLT (3/4-NC X 1-1/4", NLK)	
10	115-003	2	ZERK (1/4-NF, STR)	SEE FOOTNOTE 1, QTY = 1 PER ROLLER AND 1 PER BOOM
11	275-043	1	CHAIN TENSION	
12	105-067	4	BOLT (1/2-NC X 2-3/4")	
13	106-034	1	SET SCREW (1-NC X 6", SQ)	
14	105-1125	2	DIRT SHIELD	EACH ROLLER ASSY REQUIRES ONE 105-1125 - SEE F/N 1 & 3
15	140-1299	1	LOW PROFILE SPROCKET, GREASABLE	SEE FOOTNOTE 3
16	125-1022	1	BALL BEARING RELUBRICABLE (1.125", SQ)	SEE FOOTNOTE 3

### NOT SHOWN:

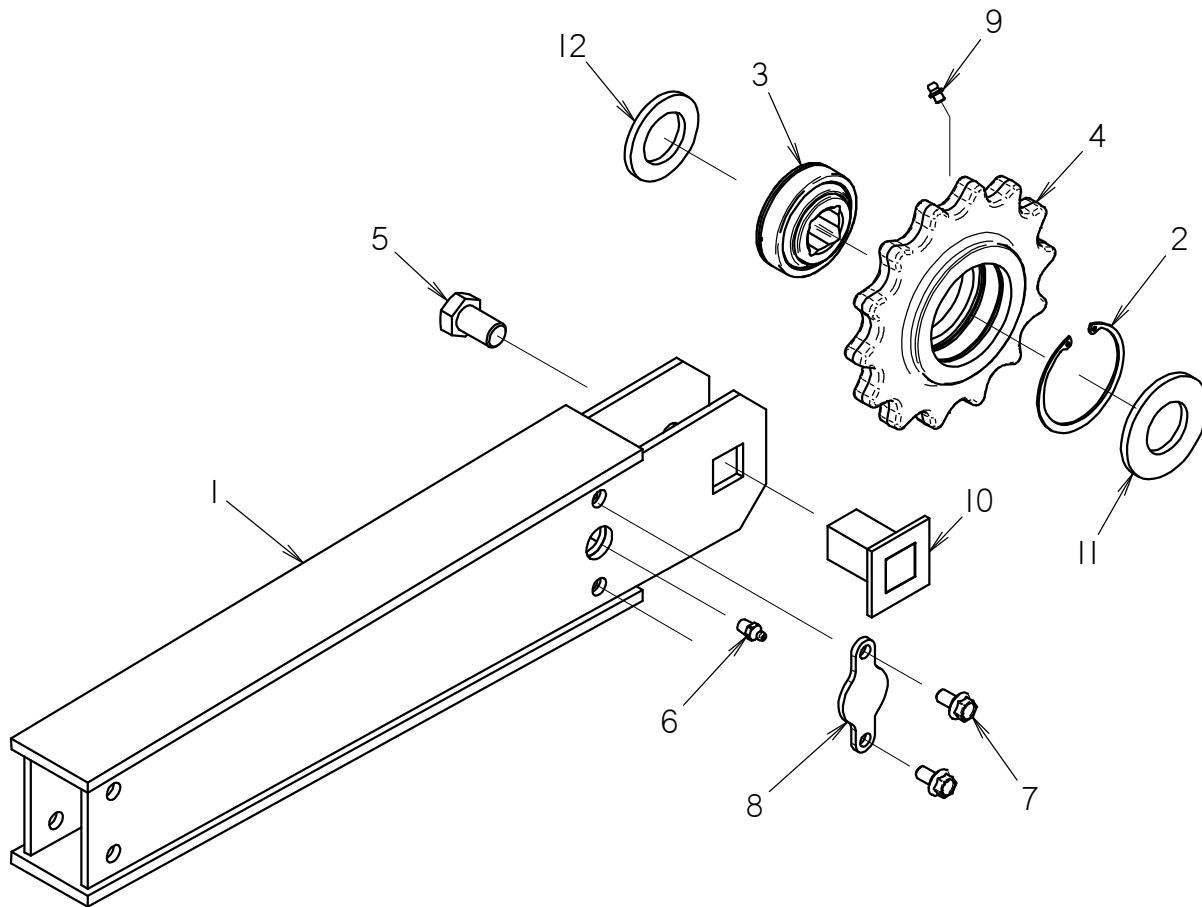
140-1302	LOW PROFILE SPROCKET BOOM, SEALED (24")	SEE FOOTNOTE 1 & 2
140-1287	LOW PROFILE SPROCKET BOOM, SEALED (30")	SEE FOOTNOTE 1 & 2
140-1288	LOW PROFILE SPROCKET BOOM, SEALED (36")	SEE FOOTNOTE 1 & 2
140-1304	LOW PROFILE SPROCKET BOOM, SEALED (42")	SEE FOOTNOTE 1 & 2
140-1306	LOW PROFILE SPROCKET BOOM, SEALED (48")	SEE FOOTNOTE 1 & 2
140-1303	LOW PROFILE SPRKT BOOM,GREASABLE (24")	SEE FOOTNOTE 2 & 3
140-1292	LOW PROFILE SPRKT BOOM,GREASABLE (30")	SEE FOOTNOTE 2 & 3
140-1293	LOW PROFILE SPRKT BOOM,GREASABLE (36")	SEE FOOTNOTE 2 & 3
140-1305	LOW PROFILE SPRKT BOOM,GREASABLE (42")	SEE FOOTNOTE 2 & 3
140-1307	LOW PROFILE SPRKT BOOM,GREASABLE (48")	SEE FOOTNOTE 2 & 3

### FOOTNOTES:

- 1- 140-1289 LOW PROFILE SPROCKET ASSY, SEALED, INCL REF #'S 2-5 AND 14  
 2- 140-1302 LOW PROFILE SPROCKET BOOM, SEALED (24"), INCL REF #'S 1-14  
 140-1287 LOW PROFILE SPROCKET BOOM, SEALED (30"), INCL REF #'S 1-14  
 140-1288 LOW PROFILE SPROCKET BOOM, SEALED (36"), INCL REF #'S 1-14  
 140-1304 LOW PROFILE SPROCKET BOOM, SEALED (42"), INCL REF #'S 1-14  
 140-1306 LOW PROFILE SPROCKET BOOM, SEALED (48"), INCL REF #'S 1-14  
 140-1303 LOW PROFILE SPROCKET BOOM, GREASABLE (24"), INCL REF #'S 1-3,6-16  
 140-1292 LOW PROFILE SPROCKET BOOM, GREASABLE (30"), INCL REF #'S 1-3,6-16  
 140-1293 LOW PROFILE SPROCKET BOOM, GREASABLE (36"), INCL REF #'S 1-3,6-16  
 140-1305 LOW PROFILE SPROCKET BOOM, GREASABLE (42"), INCL REF #'S 1-3,6-16  
 140-1307 LOW PROFILE SPROCKET BOOM, GREASABLE (48"), INCL REF #'S 1-3,6-16  
 3- 140-1290 LOW PROFILE SPROCKET ASSY, GREASABLE, INCL REF #'S 2,3,10,14-16

### NOTE:

## GREASE BOOM, SPROCKET



## GREASE BOOM, SPROCKET

REF NO.	PART NUMBER	QTY	DESCRIPTION	REMARKS
1	140-1315	1	GREASE TENSION BOOM, 24"	140-1316 (30") 140-1317 (36")
2	115-464	1	INTERNAL SNAP RING (3.149")	SEE FOOTNOTE 1
3	125-1022	1	BALL BEARING RELUBRICABLE (1.125", SQ)	SEE FOOTNOTE 1
4	140-1299	1	LOW PROFILE SPROCKET, GREASABLE	SEE FOOTNOTE 1
5	105-379	1	LK BOLT (3/4-NC X 1-1/4", NLK)	
6	115-024	1	ZERK (02N, 5000)	
7	105-825	2	FLG LK BOLT (3/8-NC X 3/4)	
8	319-410	1	ZERK COVER	
9	115-003	1	ZERK (1/4-NF, STR)	SEE FOOTNOTE 1
10	180-445	1	IDLER SHAFT (1.125"SQ X1.937")	SEE FOOTNOTE 1
11	105-1126	1	DIRT SHIELD	SEE FOOTNOTE 1
12	105-1125	1	DIRT SHIELD	SEE FOOTNOTE 1

## NOT SHOWN:

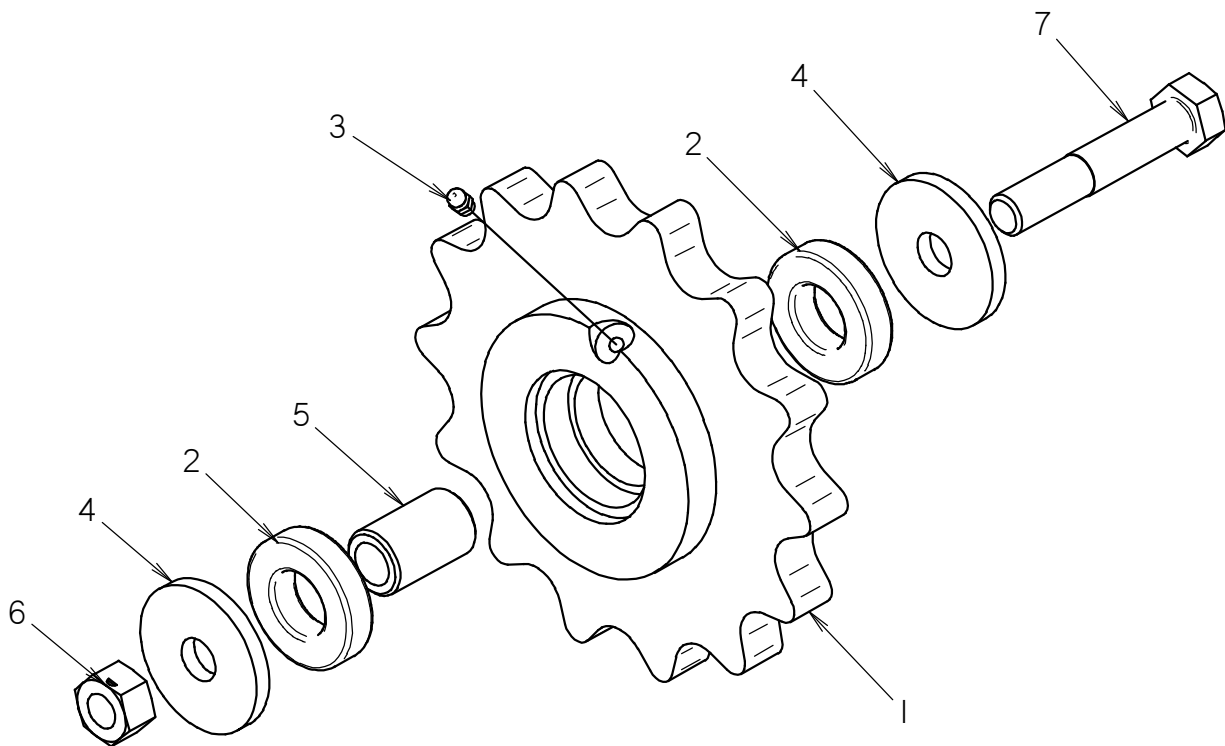
140-1318	GREASE BOOM ASSY (24"), SPROCKET	INCL'S REF #1-12
140-1319	GREASE BOOM ASSY (30"), SPROCKET	INCL'S REF #1-12
140-1327	GREASE BOOM ASSY (36"), SPROCKET	INCL'S REF #1-12

## FOOTNOTES:

1. 140-1290 LOW PROFILE SPROCKET ASSY, GREASABLE - INCL'S REF#2, 3, 4, 9, 11 & 12

## NOTE:

## BOOM SPROCKET



# BOOM SPROCKET

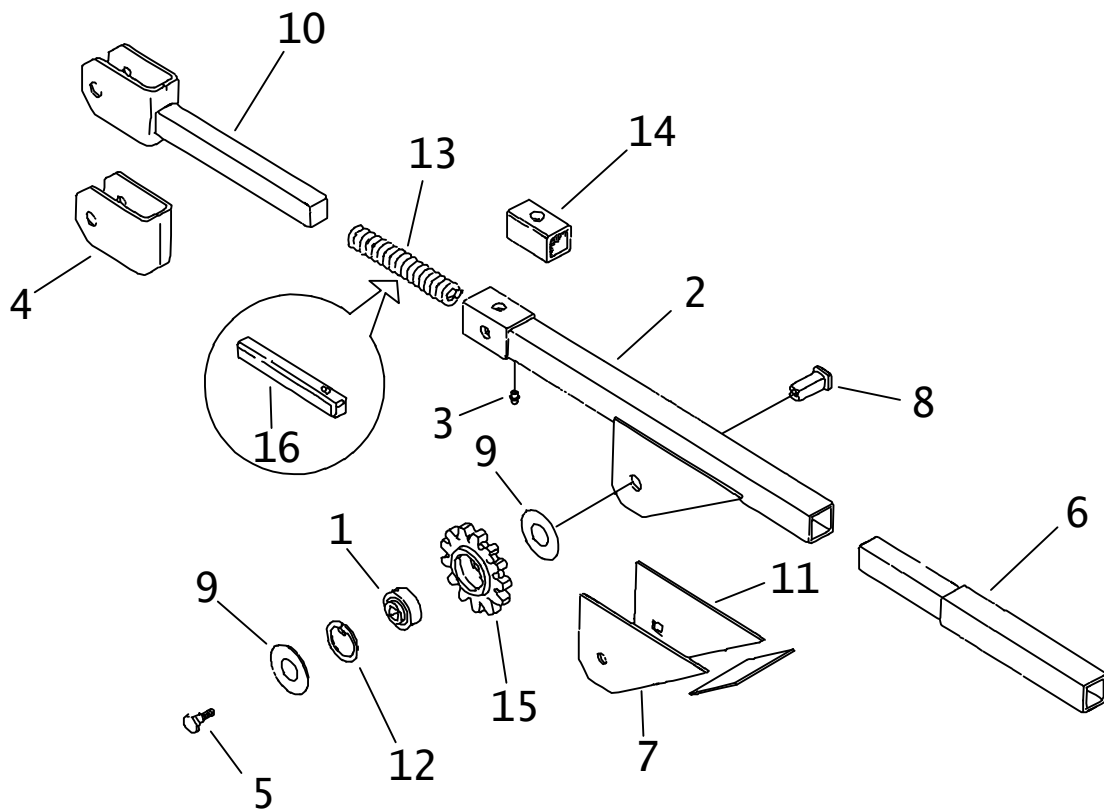
REF NO.	PART NUMBER	QTY	DESCRIPTION	REMARKS
1	140-1098	1	SPROCKET ASSEMBLY, 14 TOOTH	
2	125-007	2	BALL BEARING	
3	115-013	1	ZERK (1/4-NF, STR)	
4	105-416	2	WASHER (5/8")	
5	300-7438	1	BUSHING	
6	105-357	1	LOCKNUT (5/8-NC)	
7	106-212	1	BOLT (5/8-NC X 3-1/2")	

NOT SHOWN:

FOOTNOTES:

NOTE:

## BOOM



## BOOM

REF NO.	PART NUMBER	QTY	DESCRIPTION	REMARKS
	140-060		SPROCKET BOOM (36")	INCL. REF. NO.'S 1, 2, 5, 8, 9, 10 AND 12 THRU 15
1.	125-009	1	BALL BEARING (1.125")	REFER TO INSTRUCTIONS 051-345
2.	140-051	1	BOOM (3')	INCL. REF. NO.'S 7 AND 11
	140-027	2	BOOM SLEEVE SOCKET	WELD ON
	143-314		BOOM SLEEVE SOCKET	
3.	115-002	1	ZERK (02N90)	SEE FOOTNOTE 2
4.	140-762	1	SPROCKET SIDE PLATE	WELD ON
5.	105-379	2	LK BOLT (3/4-NC X 1-1/4", NLK)	
6.	140-551	1	BOOM EXTENSION (1')	
7.	140-054	1	IDLER SPROCKET SUPPORT	WELD ON
	326-710	1	REINFORCEMENT BAR	WELD ON & SEE FOOTNOTE 3
8.	180-445	2	IDLER SHAFT (1.125"SQ X1.937")	
9.	105-1126	2	DIRT SHIELD	
10.	140-759	1	SLIDE AND STOP	
11.	140-053	1	IDLER SPROCKET SUPPORT	WELD ON
12.	115-464	2	INTERNAL SNAP RING (3.149")	
13.	115-554	1	COMPRESSION SPRING (8")	SEE FOOTNOTE 1
14.	140-028		URETHANE SLEEVE (1.56" X 4.8")	
15.	140-712	2	SPROCKET (1.654"C12)	
	140-653		SPROCKET PARTS ASS'Y (1.654"C12)	INCL. REF. NO.'S 1, 9 AND 12
16.	140-516		URETHANE SPRING (1-3/8" X 7")	SEE FOOTNOTE 1

NOT SHOWN:

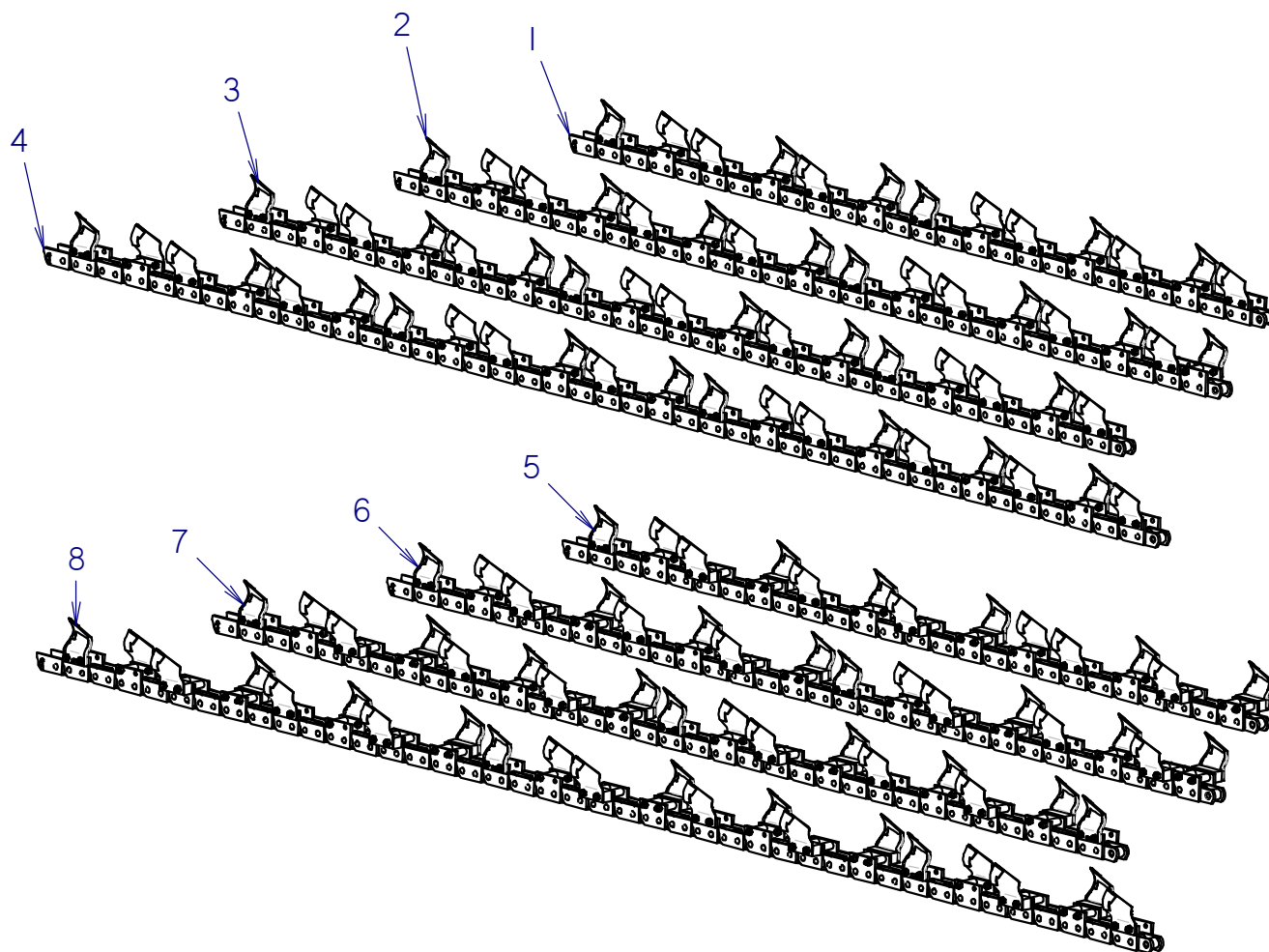
### FOOTNOTES:

1. URETHANE SPRING (REF. NO. 16) MAY BE USED TO REPLACE COMPRESSION SPRING (REF. NO. 13).
2. ZERK (REF. NO. 3) IS NOT REQUIRED WHEN USING URETHANE BOOM SLEEVE.
3. USED TO SPACE SQ AND RD HOLE GUSSET (REF. NO.'S 7 AND 11).

NOTE:

# 35K DURATOOTH CHAINS

## 4P CHAIN ASSEMBLIES



PART#	135-1601	135-1602	135-1603	135-1604	135-1605	135-1606	135-1607	135-1608
130-1101	1	0	0	0	1	0	0	0
130-1102	0	1	0	0	0	1	0	0
130-1103	0	0	1	0	0	0	1	0
130-1104	0	0	0	1	0	0	0	1
135-1230	6	8	8	10	6	8	9	11
135-1231	7	8	9	11	7	8	8	11
106-400	13	16	17	21	7	8	9	12
105-099	13	16	17	21	7	8	9	12
137-214	13	16	17	21	19	24	25	32
105-047	26	32	34	42	26	32	34	44
136-029	0	0	0	0	6	8	8	10
105-258	0	0	0	0	12	16	16	20



## 35K DURATOOTH CHAINS 4P CHAIN ASSEMBLIES

REF NO.	PART NUMBER	QTY	DESCRIPTION	REMARKS
1	135-1601	1	35K 4P DURA 52P 4.4	
2	135-1602	1	35K 4P DURA 62P 4.4	
3	135-1603	1	35K 4P DURA 68P 4.4	
4	135-1604	1	35K 4P DURA 84P 4.4	
5	135-1605	1	35K 4P DURA 52P 6.4	
6	135-1606	1	35K 4P DURA 62P 6.4	
7	135-1607	1	35K 4P DURA 68P 6.4	
8	135-1608	1	35K 4P DURA 84P 6.4	

NOT SHOWN:

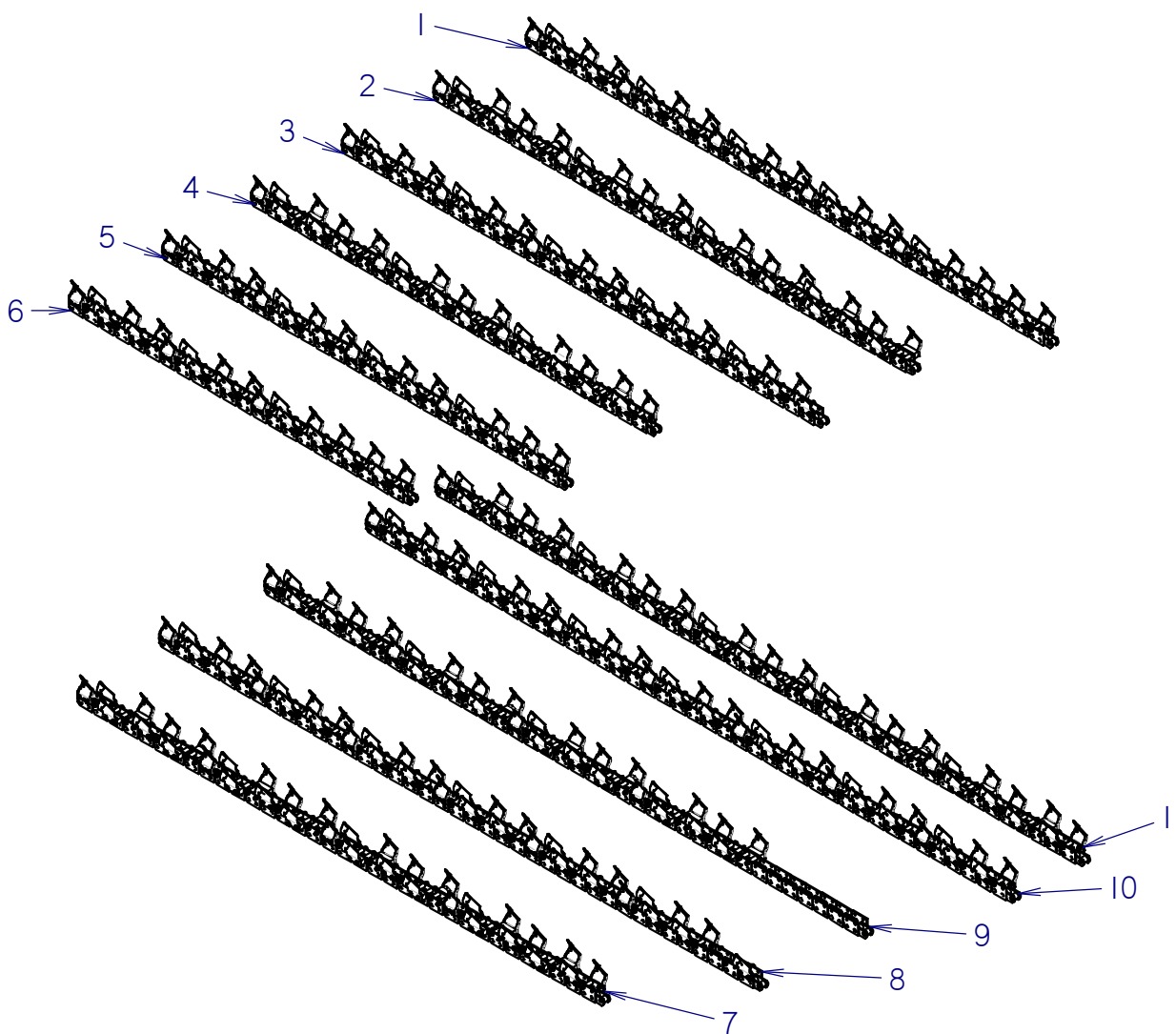
FOOTNOTES:

**NOTE:**

1. 35K REPAIR STATION KIT 131-001, 35K MASTER PIN 135-1028, 33K & 35K LOCK KEY 135-1085.
2. NOT ALL CHAINS LISTED MAY BE SUITABLE FOR YOUR ATTACHMENT. CONSULT A DITCH WITCH DEALER FOR MORE INFORMATION.

# 35K DURATOOTH CHAINS

## 2P CHAIN ASSEMBLIES



Part#	135-1600	137-218	137-217	137-215	137-216	137-219	137-221	135-1450	135-1451	137-220	137-222
135-1531	0	0	0	0	0	1	1	0	0	1	1
137-208	0	0	0	0	0	0	0	1	1	1	1
130-1105	1	0	0	0	0	0	0	0	0	0	0
137-210	0	0	0	1	1	0	0	1	1	0	0
137-209	0	1	1	0	0	0	0	0	0	0	0
135-1230	11	13	13	15	15	17	17	19	19	21	21
135-1231	11	13	13	16	16	17	17	20	20	21	21
106-400	22	26	14	31	15	34	18	39	19	42	22
105-099	22	26	14	31	15	34	18	39	19	42	22
137-214	22	26	38	31	47	34	50	39	59	42	62
105-047	44	52	52	62	62	68	68	78	78	84	84
136-029	0	0	12	0	16	0	16	0	20	0	20
105-258	0	0	24	0	32	0	32	0	40	0	40

## 35K DURATOOTH CHAINS 2P CHAIN ASSEMBLIES

REF NO.	PART NUMBER	QTY	DESCRIPTION	REMARKS
1	137-219	1	35K 2P DURA 68P 4.6	
2	137-216	1	35K 2P DURA 62P 6.6	
3	137-215	1	35K 2P DURA 62P 4.6	
4	137-217	1	35K 2P DURA 52P 6.6	
5	137-218	1	35K 2P DURA 52P 4.6	
6	135-1600	1	35K 2P DURA 44P 4.4	
7	137-221	1	35K 2P DURA 68P 6.6	
8	135-1450	1	35K 2P DURA 78P 4.6	
9	135-1451	1	35K 2P DURA 78P 6.6	
10	137-220	1	35K 2P DURA 84P 4.6	
11	137-222	1	35K 2P DURA 84P 6.6	

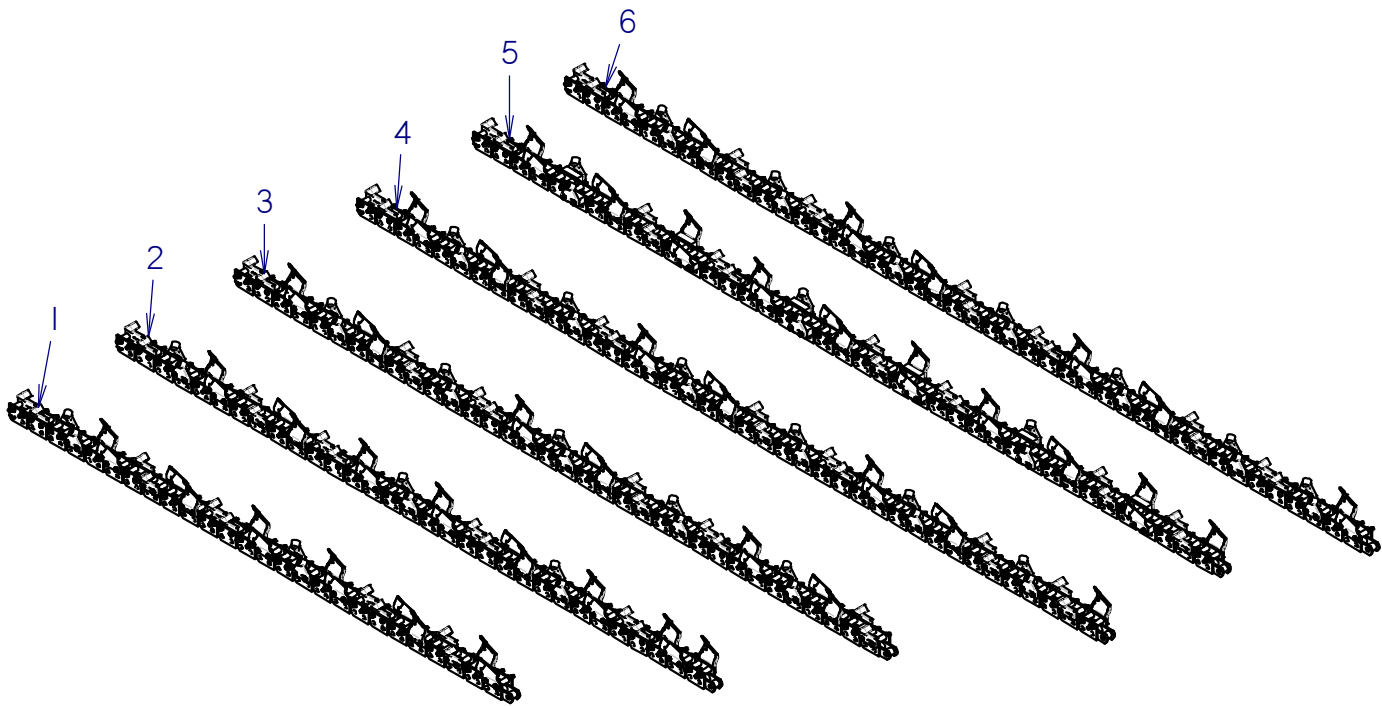
NOT SHOWN:

FOOTNOTES:

**NOTE:**

- 35K REPAIR STATION KIT 131-001, 35K MASTER PIN 135-1028, 33K & 35K LOCK KEY 135-1085.
- NOT ALL CHAINS LISTED MAY BE SUITABLE FOR YOUR ATTACHMENT. CONSULT A DITCH WITCH DEALER FOR MORE INFORMATION.

## 35K ALLIGATOR/DURATOOTH CHAINS 2P CHAIN ASSEMBLIES



Part#	137-229	137-230	137-231	135-1456	135-1457	137-232
135-1531	0	0	1	0	0	1
137-208	0	0	0	1	1	1
130-1105	0	0	0	0	0	0
137-210	0	1	0	1	1	0
137-209	1	0	0	0	0	0
135-1230	6	8	6	7	10	135
135-1231	6	7	6	6	9	7
136-163	2	3	5	6	3	7
136-165	2	3	5	6	3	7
136-164	10	10	12	14	14	14
106-400	12	16	12	12	12	16
105-098	40	46	56	66	42	68
137-214	40	46	56	66	66	68
137-212	12	16	12	12	12	16
105-814	52	62	68	78	78	84
136-029	0	0	0	0	12	0
105-022	0	0	0	0	24	0

## 35K ALLIGATOR/DURATOOTH CHAINS 2P CHAIN ASSEMBLIES

REF NO.	PART NUMBER	QTY	DESCRIPTION	REMARKS
1	137-229	1	35K 2P CMB DUR/ALG B 52P 4.6	USES 131-259 INSERT BIT-CARBIDE TIPPED
2	137-230	1	35K 2P CMB DUR/ALG B 62P 4.6	USES 131-259 INSERT BIT-CARBIDE TIPPED
3	137-231	1	35K 2P CMB DUR/ALG B 68P 4.6	USES 131-259 INSERT BIT-CARBIDE TIPPED
4	135-1456	1	35K 2P CMB DUR/ALG B 78P 4.6	USES 131-259 INSERT BIT-CARBIDE TIPPED
5	135-1457	1	35K 2P DURA/ALG B/O COM 78P 6.6	USES 131-259 INSERT BIT-CARBIDE TIPPED
6	137-232	1	35K 2P CMB DUR/ALG B 84P 4.6	USES 131-259 INSERT BIT-CARBIDE TIPPED

NOT SHOWN:

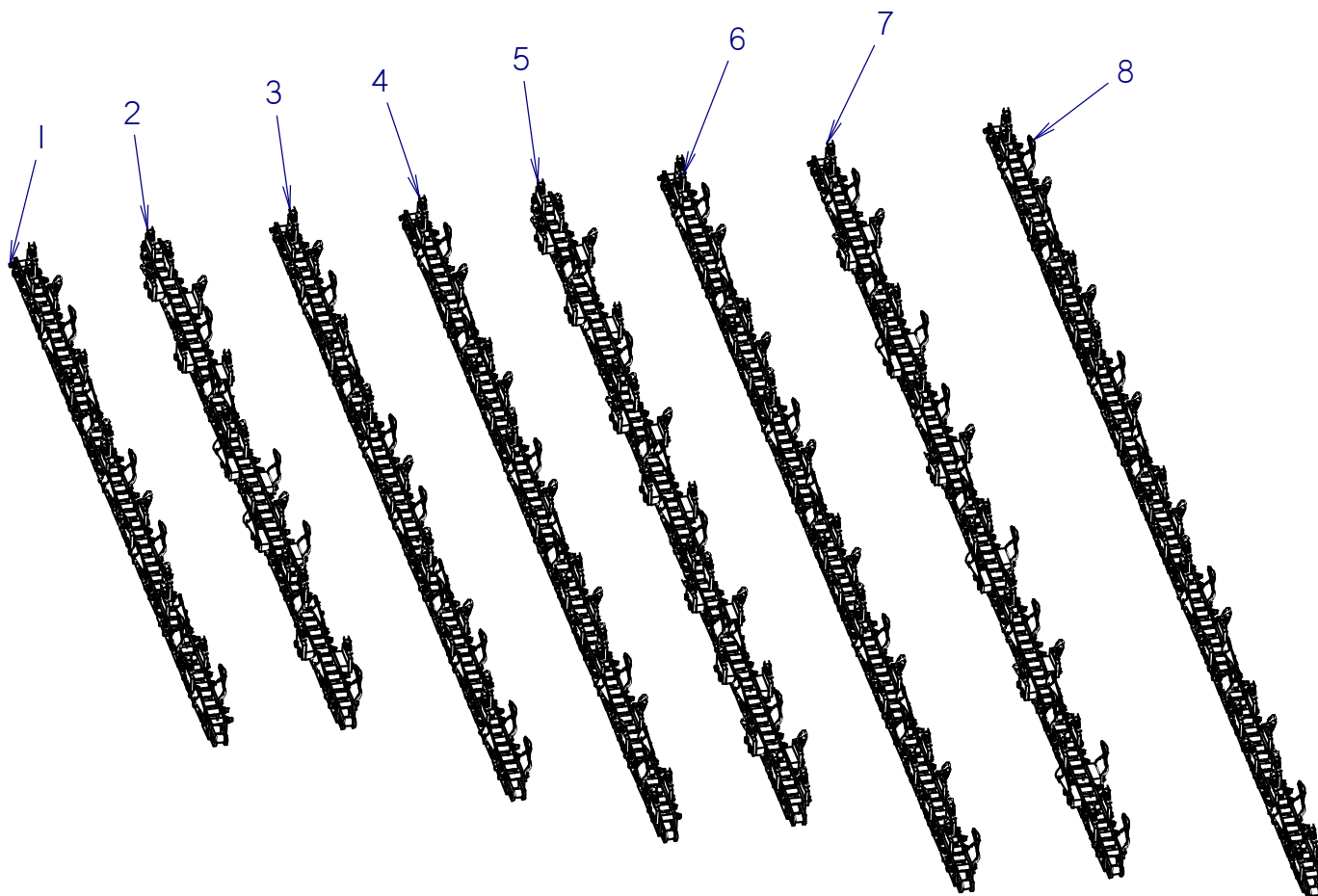
FOOTNOTES:

**NOTE:**

1. 35K REPAIR STATION KIT 131-001, 35K MASTER PIN 135-1028, 33K&35K LOCK KEY 135-1085
2. NOT ALL CHAINS LISTED MAY BE SUITABLE FOR YOUR ATTACHMENT. CONSULT A DITCH WITCH DEALER FOR MORE INFORMATION.

# 35K SHARK/DURATOOTH CHAINS

## 2P CHAIN ASSEMBLIES



Part#	137-233	135-1021	137-235	137-236	135-1445	135-1454	135-1455	137-237
135-1531	0	0	0	1	1	0	0	1
137-208	0	0	0	0	0	1	1	1
130-1105	0	0	0	0	0	0	0	0
137-210	0	0	1	0	0	1	1	0
137-209	1	1	0	0	0	0	0	0
135-1230	6	6	8	6	6	7	10	7
135-1231	6	6	7	6	6	6	9	7
135-637	2	2	3	5	4	6	3	6
135-638	2	2	3	5	4	6	3	6
135-639	10	10	10	12	14	14	14	16
106-400	12	12	16	12	12	16	12	16
105-098	40	20	46	56	28	62	42	68
137-214	40	40	46	56	56	62	66	68
137-212	12	12	16	12	12	16	12	16
105-814	52	52	62	68	68	78	78	84
136-029	0	10	0	0	14	0	12	0
105-022	0	20	0	0	28	0	24	0

## 35K SHARK/DURATOOTH CHAINS 2P CHAIN ASSEMBLIES

REF NO.	PART NUMBER	QTY	DESCRIPTION	REMARKS
1	137-233	1	35K 2P CMB DUR/SHK B 52P 4.6	
2	135-1021	1	35K 2P CMB DURA/SHK B 52P 6.6	
3	137-235	1	35K 2P CMB DUR/SHK B 62P 4.6	
4	137-236	1	35K 2P CMB DUR/SHK B 68P 4.6	
5	135-1445	1	35K 2P SHK B/O COM 68P 6.0	
6	135-1454	1	35K 2P CMB DUR/SHK B 78P 4.6	
7	135-1455	1	35K 2P CMB DUR/SHK B 78P 6.6	
8	137-237	1	35K 2P CMB DUR/SHK B 84P 4.6	

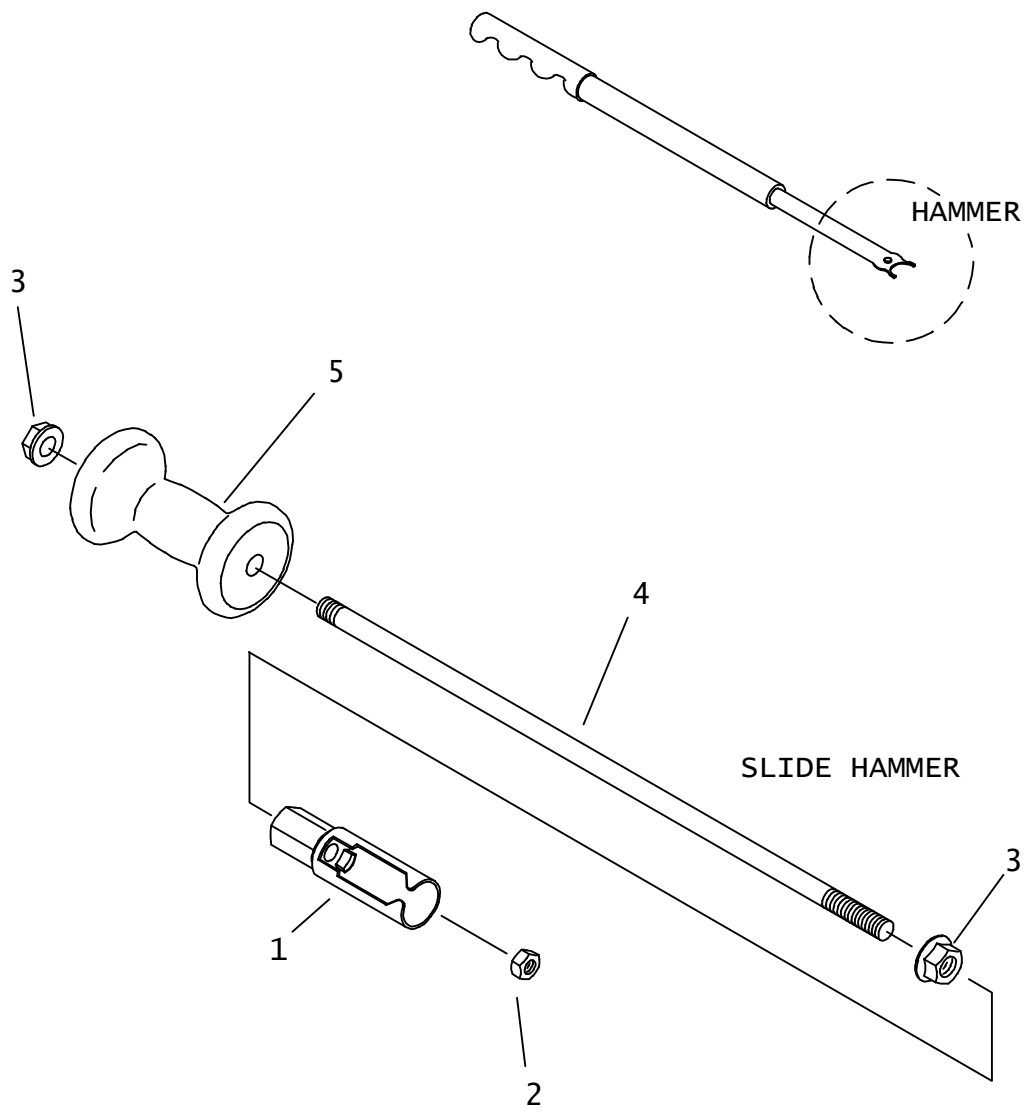
NOT SHOWN:

FOOTNOTES:

**NOTE:**

1. 35K REPAIR STATION KIT 131-001, 35K MASTER PIN 135-1028, 33K & 35K LOCK KEY 135-1085
2. NOT ALL CHAINS LISTED MAY BE SUITABLE FOR YOUR ATTACHMENT. CONSULT A DITCH WITCH DEALER FOR MORE INFORMATION.

# SPECIAL TOOLS BIT PULLER FOR ALLIGATOR BITS





## SPECIAL TOOLS

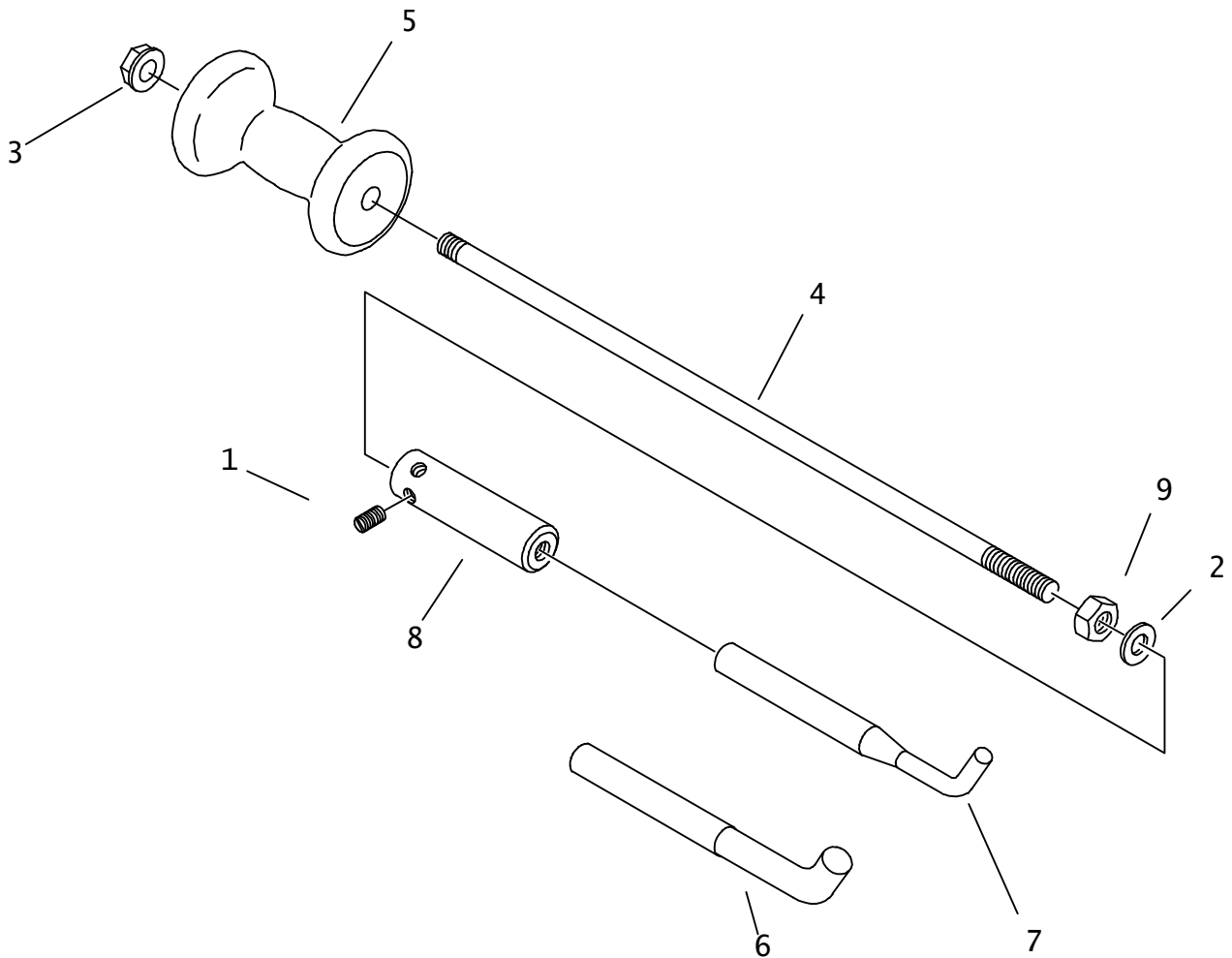
### BIT PULLER FOR ALLIGATOR BITS

REF NO.	PART NUMBER	QTY	DESCRIPTION	REMARKS
	259-002		BIT PULLER - SLIDE HAMMER	INCL REF NO.'S 1 - 5
	259-001		BIT PULLER - HAMMER	EARLY STYLE
1.	259-036	1	BIT PULLER	
2.	105-403	1	JAM NUT (5/8-NC)	
3.	105-357	2	LOCKNUT (5/8-NC)	
4.	183-072	1	SLIDE HAMMER ROD	
5.	259-003	1	SLIDE HAMMER	

FOOTNOTES

NOTE:

## SPECIAL TOOLS - ALIG BIT PUNCH



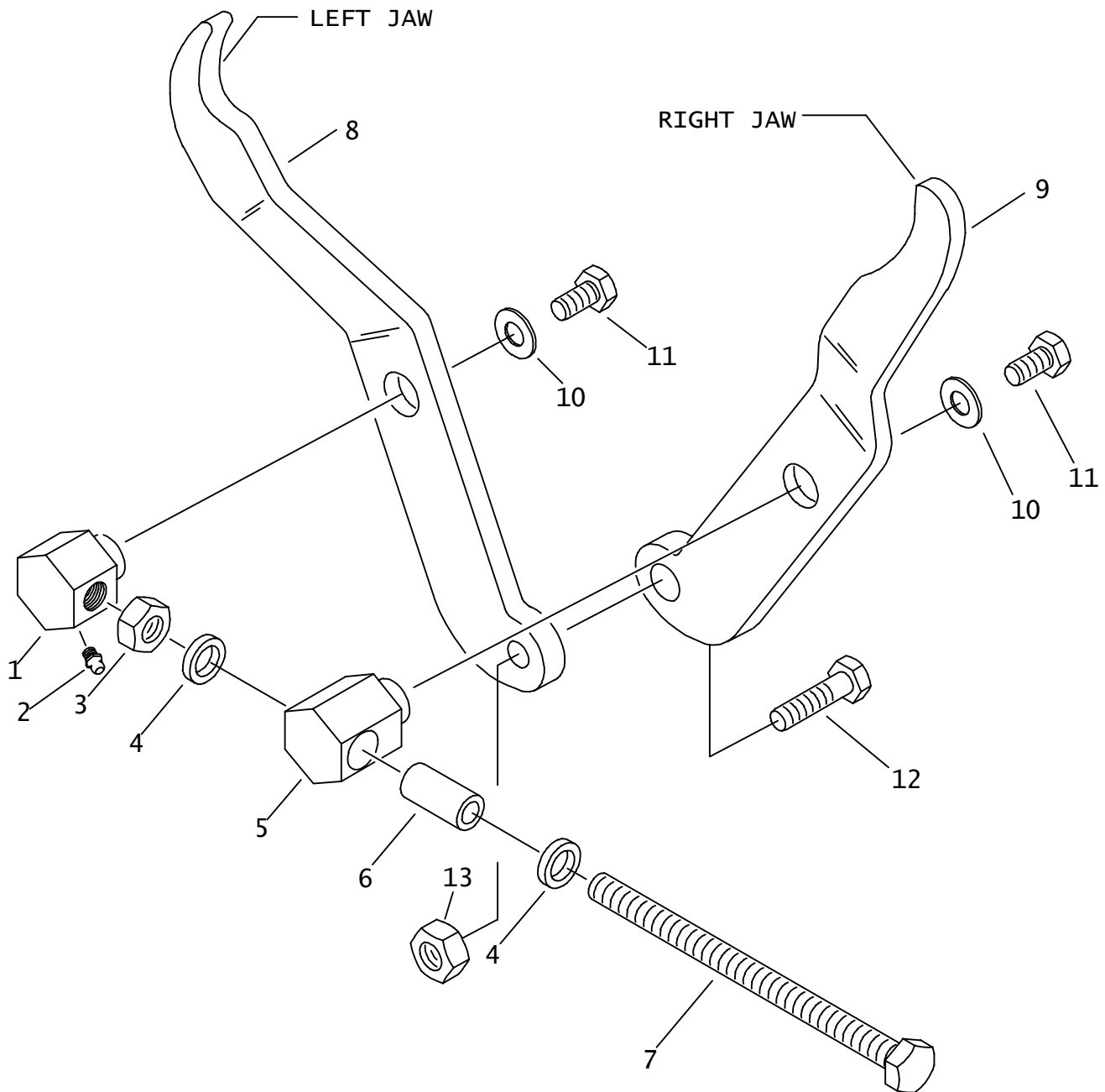
## SPECIAL TOOLS - ALIG BIT PUNCH

REF NO.	PART NUMBER	QTY	DESCRIPTION	REMARKS
	259-150		BIT PUNCH - SLIDE HAMMER	INCL REF NO.'S 1 THRU 8
1.	105-708	2	SET SCREW (3/8-NC X 3/8", NLK)	
2.	105-964	1	WASHER (.656")	
3.	105-994	1	FLG LOCKNUT (5/8-NC)	
4.	183-072	1	SLIDE HAMMER ROD	
5.	259-003	1	SLIDE HAMMER	
6.	259-151	1	HEAVY BIT PUNCH-SLIDE HAMMER	
7.	259-152	1	LIGHT BIT PUNCH-SLIDE HAMMER	
8.	259-153	1	PUNCH ADAPTER-SLIDE HAMMER	
9.	105-357	1	LOCKNUT (5/8-NC)	

FOOTNOTES

NOTE:

## SPECIAL TOOL - CHAIN JAWS FOR USE ON MASTER LINKS



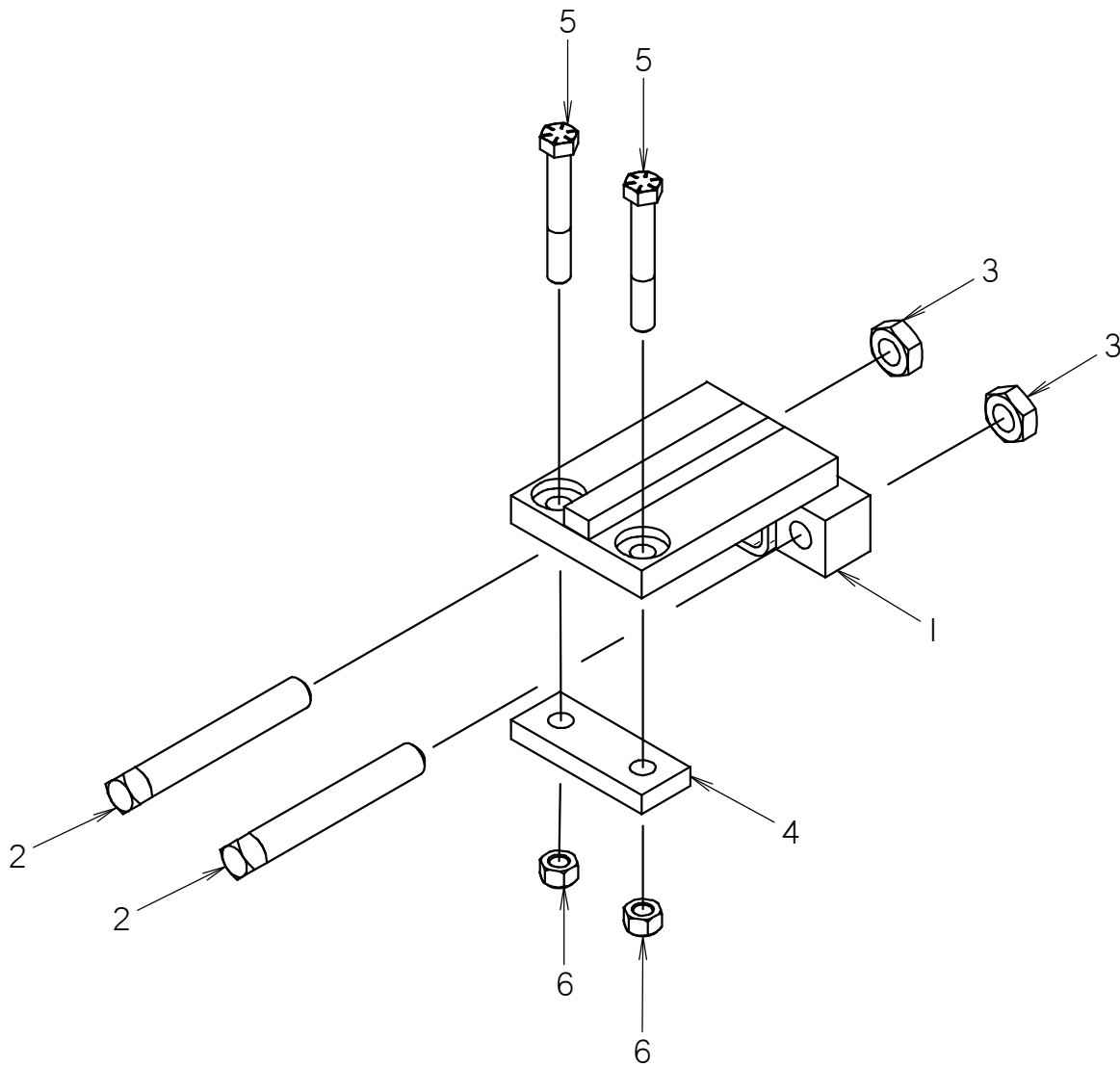
## SPECIAL TOOL - CHAIN JAWS FOR USE ON MASTER LINKS

REF NO.	PART NUMBER	QTY	DESCRIPTION	REMARKS
	259-140		CHAIN JAWS (1-1/8" DRIVE)	INCL REF NO'S 1 - 13
1.	259-186	1	THREADED TRUNION	
2.	115-003	1	ZERK (1/4-NF, STR)	
3.	105-310	1	JAM NUT (3/4-NC)	
4.	105-975	2	WASHER (3/4")	
5.	259-185	1	SLIP TRUNION	
6.	125-402	1	BRONZE BUSHING (.750")	
7.	107-761	1	BOLT ALL THREAD (3/4-10 NC X 11")	
8.	259-181	1	LEFT JAW	
9.	259-180	1	RIGHT JAW	
10.	105-059	2	WASHER (7/16")	
11.	105-181	2	BOLT (3/8-NC X 1/2")	
12.	105-066	1	BOLT (1/2-NC X 1-3/4")	
13.	105-065	1	LOCKNUT (1/2-NC)	

FOOTNOTES

NOTE:

## SPROCKET BOOM ADJUSTER KIT



## SPROCKET BOOM ADJUSTER KIT

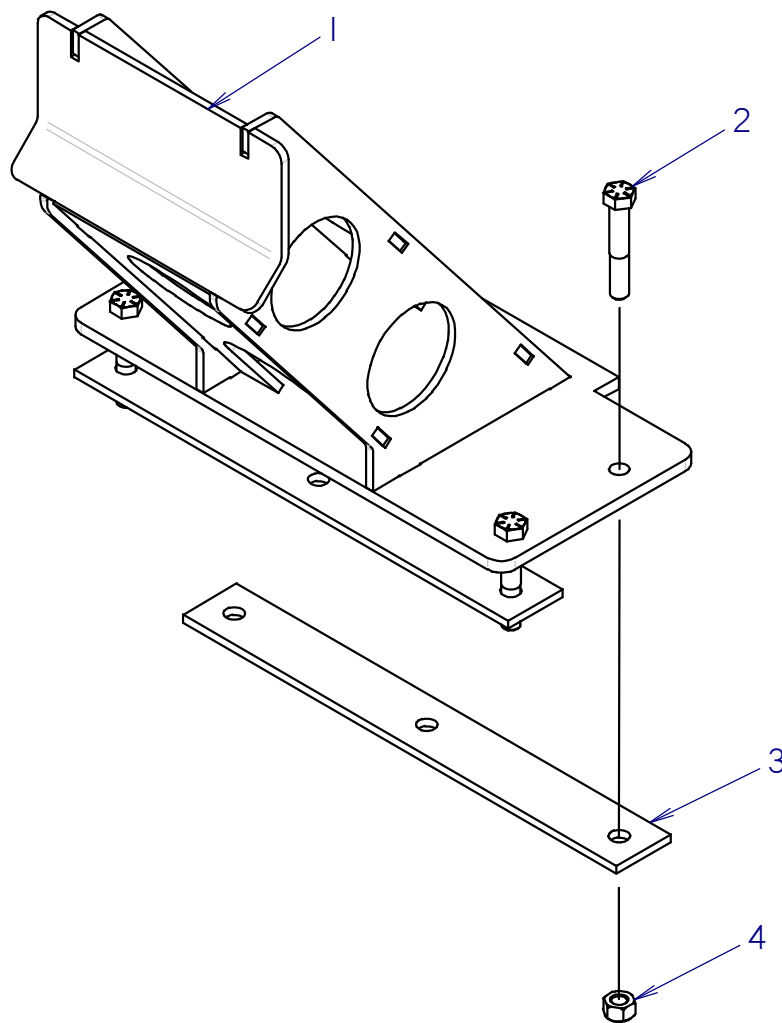
REF NO.	PART NUMBER	QTY	DESCRIPTION	REMARKS
	140-1159	-	SPROCKET BOOM ADJUSTER KIT	INCLUDES P/N'S 1-6
1	300-8197	1	SPROCKET BOOM ADJUSTER	
2	105-352	2	SET SCREW (3/4-NC X 5", SQ)	
3	105-310	2	JAM NUT (3/4-NC)	
4	141-148	1	SUPPORT CLAMP BAR	
5	105-136	2	BOLT (1/2-NC X 3-1/2", GD8)	
6	105-065	2	LOCKNUT (1/2-NC)	

NOT SHOWN:

FOOTNOTES:

NOTE:

## FRONT END INTERCHANGE STOP





## FRONT END INTERCHANGE STOP

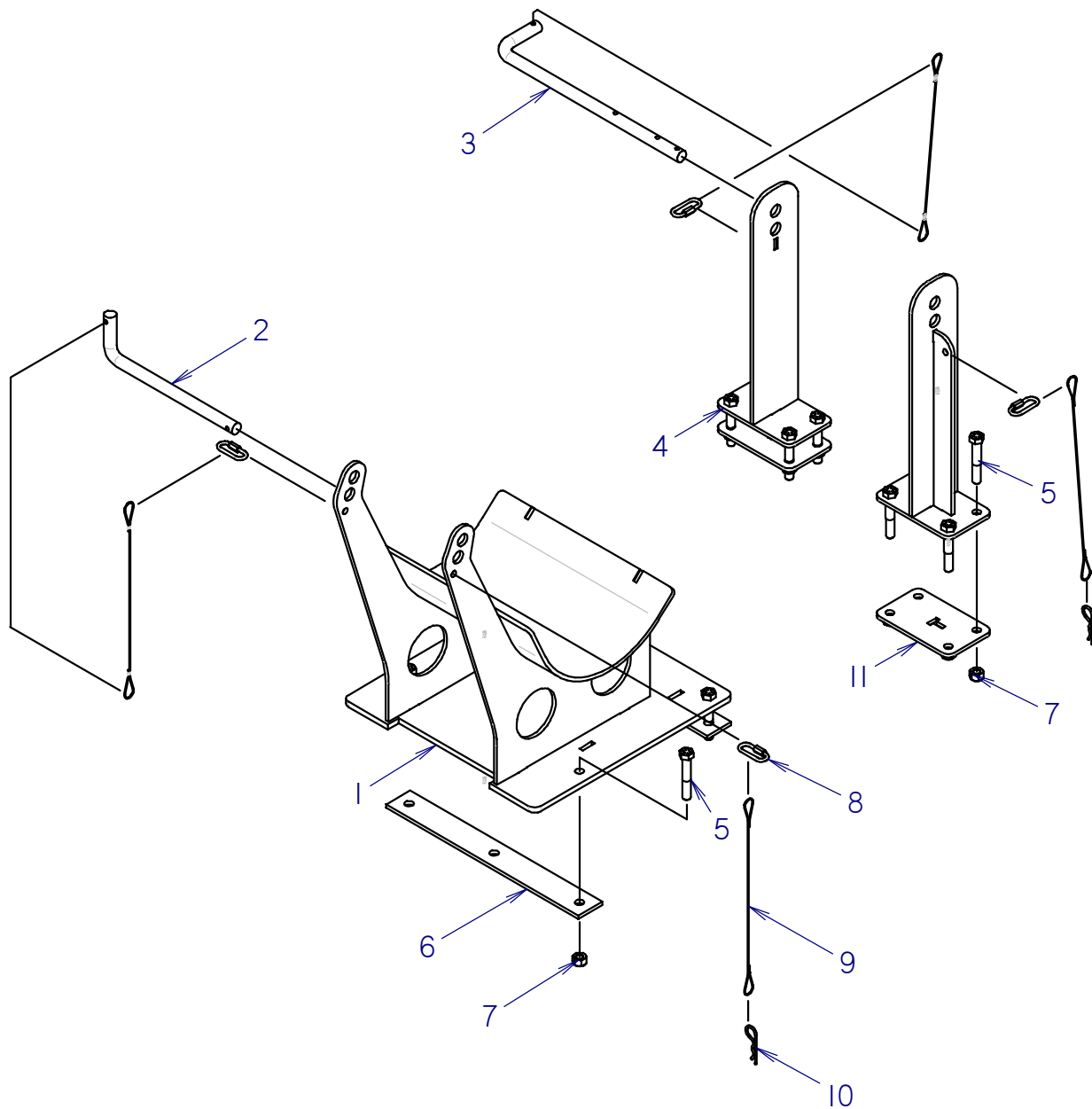
REF NO.	PART NUMBER	QTY	DESCRIPTION	REMARKS
	323-0012	-	FRONT END INTERCHANGE STOP	INCLUDES REF. NO'S 1-4
1	300-6609	1	FRONT END INTERCHANGE STOP	
2	106-210	4	BOLT (1/2-NC X 3")	
3	300-6743	2	TIE BAR	
4	105-065	4	LOCKNUT (1/2-NC)	

NOT SHOWN:

FOOTNOTES:

NOTE:

## TRENCHER STAND



## TRENCHER STAND

REF NO.	PART NUMBER	QTY	DESCRIPTION	REMARKS
	323-0007	-	TRENCHER STAND	INCLUDES REF. NO'S 1-10
1	300-5163	1	TRENCHER STAND	
2	179-920	1	PIN	
3	179-0001	1	LOCK PIN	
4	300-5167	2	BOOM STAND	SEE FOOTNOTE 1
5	106-210	13	BOLT (1/2-NC X 3")	
6	300-6743	2	TIE BAR	
7	105-065	13	LOCKNUT (1/2-NC)	
8	118-195	4	200 CONNECTING LINK	
9	313-0001	4	LANYARD	
10	110-033	2	HAIR CLIP PIN (1/8" X 1/2")	
11	300-5164	2	STAND BASE	

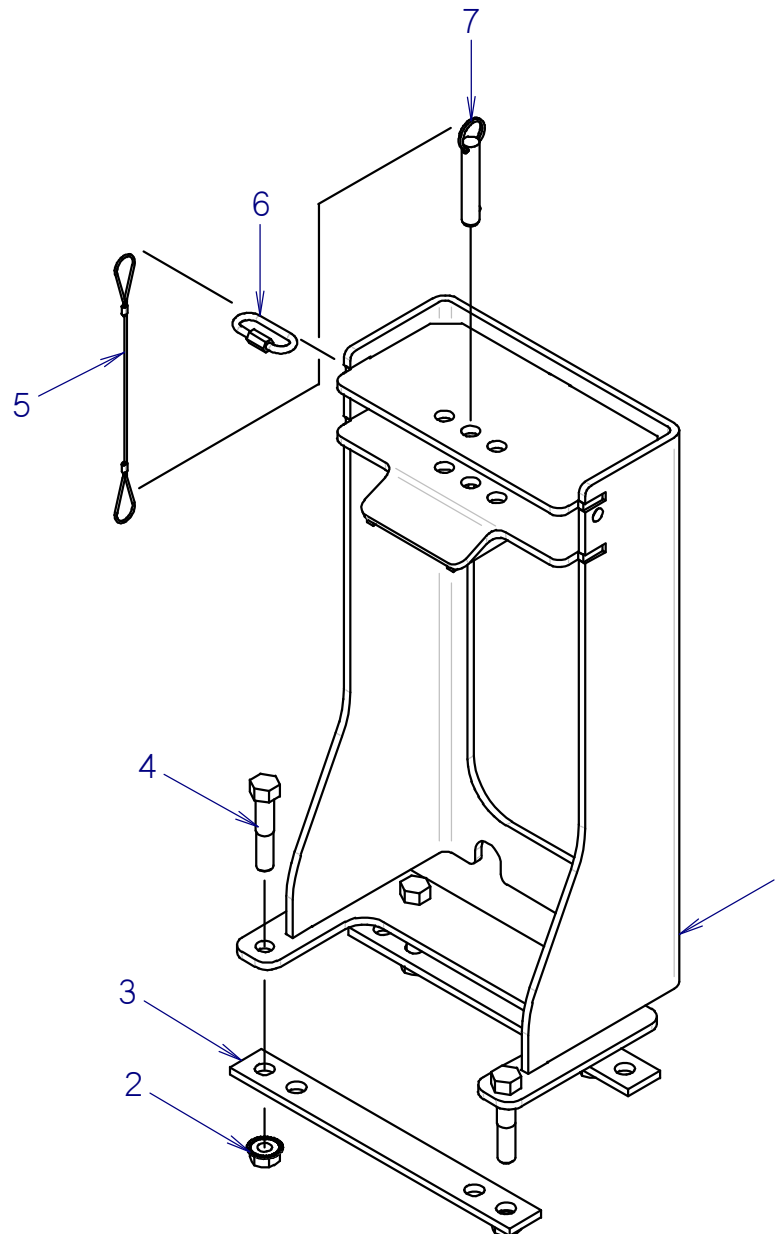
NOT SHOWN:

FOOTNOTES:

1. ADJUST MOUNT SPACE TO BEST MATCH CHAIN WIDTH AND HAIR CLIP PIN HOLE.

NOTE:

## FRONT TIE DOWN



## FRONT TIE DOWN

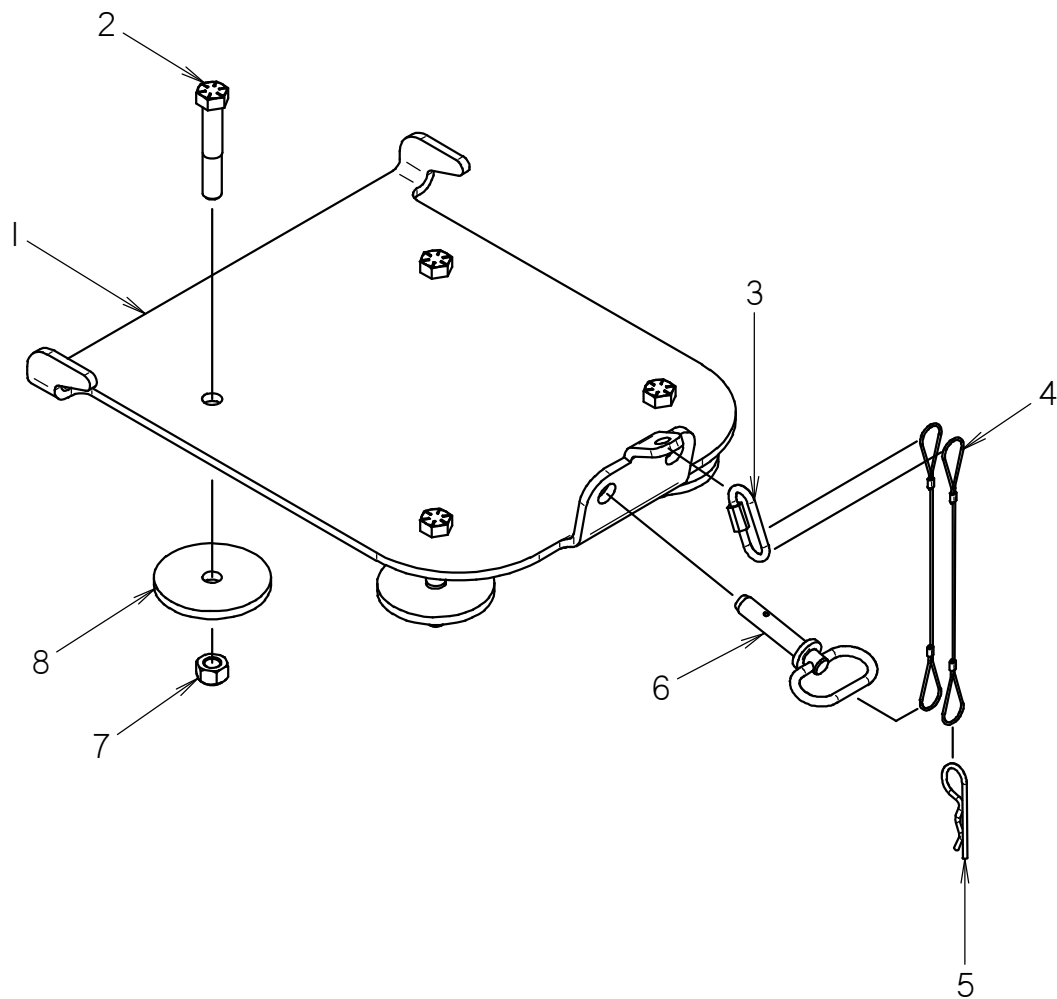
REF NO.	PART NUMBER	QTY	DESCRIPTION	REMARKS
	323-0003	-	FRONT TIE DOWN	INCLUDES REF. NO'S 1-7
1	300-5062	1	FRONT TIE DOWN	
2	105-833	4	FLG LOCKNUT (1/2-NC)	
3	300-5063	2	TIE BAR	
4	105-082	4	BOLT (1/2-NC X 2-1/2")	
5	313-759	1	LANYARD	
6	118-195	1	200 CONNECTING LINK	
7	183-411	1	PULL PIN (1/2" X 2")	

NOT SHOWN:

FOOTNOTES:

NOTE:

## BACKFILL BLADE TIE DOWN



## BACKFILL BLADE TIE DOWN

REF NO.	PART NUMBER	QTY	DESCRIPTION	REMARKS
	323-0010	-	BACKFILL BLADE TIE DOWN	INCLUDES REF. NO'S 1-8
1	300-5978	1	BACKFILL BLADE TIE DOWN	
2	106-210	4	BOLT (1/2-NC X 3")	
3	118-195	1	200 CONNECTING LINK	
4	313-759	2	LANYARD	
5	110-033	1	HAIR CLIP PIN (1/8" X 1/2")	
6	110-827	1	PIN	
7	105-065	4	LOCKNUT (1/2-NC)	
8	361-123	4	WASHER (1/2")	

NOT SHOWN:

FOOTNOTES:

NOTE: